

Data Sheet

HER2 kinase (ErbB2), GST-tag

Human, Recombinant, N-terminal GST tag

Catalog #: 40230

Lot #: 180328-3

Conc.: 0.2 mg/ml

Formulated in: 40 mM Tris-HCl, pH 8.0, 110 mM NaCl, 2.2 mM KCl, 20% Glycerol and 20 mM Glutathione and 3 mM DTT.

Stability: At least 6 months at -80°C . Avoid freeze/thaw cycles.

References:

1. Meyer, M. *et al.*, *EMBO J.* **18**, 363-374 (1999).
2. Rahimi, N. *et al.*, *J. Biol Chem* **275**, 16986-16992 (2000).

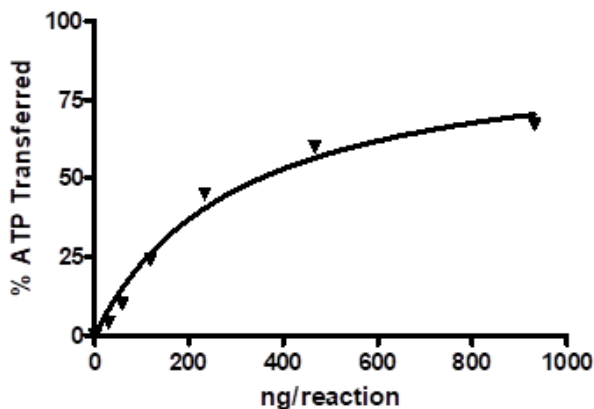
Description: Human Her 2, also known as NEU, ErbB2, TKR1, and CD340, GenBank Accession No. NM_004448, a.a. 679-1255 (end) with N-terminal GST tag, expressed in a Baculovirus infected Sf9 cell expression system. MW=89 kDa.

Specific Activity: ≥ 40 pmole/min/ μg
 Assay was done in Kinase buffer containing 2 mM DTT using Poly-(Glu:Tyr) substrate (0.2 mg/ml) and 20 μM ATP. Reaction was done at 30°C for 45 min. Amount of ATP transferred was calculated using Kinase-Glo reagent (Promega).

Application: Useful for the study of enzyme kinetics, screening inhibitors, and selectivity profiling.

Quality Assurance

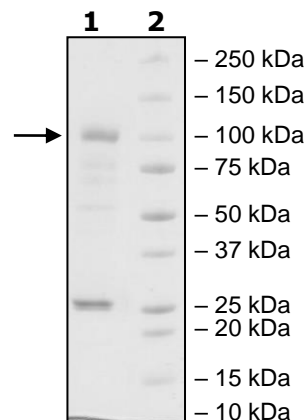
Specific Activity



4-20% SDS-PAGE Coomassie staining

Lane 1:
2 μg HER2
Lane 2:
Protein Marker

MW: 89 kDa
Purity: $\geq 43\%$



OUR PRODUCTS ARE FOR RESEARCH USE ONLY. NOT FOR DIAGNOSTIC OR THERAPEUTIC USE.

To place your order, please contact us by Phone **1.858.202.1401** Fax **1.858.481.8694**

Or you can Email us at: info@bpsbioscience.com

Please visit our website at: www.bpsbioscience.com