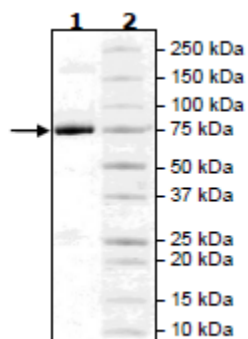


Product Information

Construct:	CSF1R (GST-His-538-972(end))
Concentration:	0.53 mg/ml
Species:	Human
Formulated In:	40 mM Tris-HCl pH 8.0, 110 mM NaCl, 2.2 mM KCl, 0.04% Tween-20 and 20% glycerol
Expression System:	Sf9
Format:	Aqueous buffer solution
Stability:	At least 6 months at -80°C. Avoid freeze/thaw cycles.
Storage:	-80°C
Genbank Accession:	BC047521
MW:	79 kDa
Purity:	≥90%
Specific Activity:	>240 pmol/min/μg
Assay Conditions:	Assay Conditions: Assay was done in a Kinase buffer using Poly-(Glu, Tyr) as a substrate with 1000 μM ATP at 30°C for 50 min. The amount of ATP transferred was calculated using ADP-Glo reagent (Promega).
Applications:	Useful for the study of enzyme kinetics, screening inhibitors, and selectivity profiling.

Quality Control Data

4-20% SDS-Page Coomassie Staining



Specific Activity

