

Data Sheet

CDK6/Cyclin D3, His-tags

Human, recombinant, N-terminal His-tags
Catalog #: 40206
Lot #: 160408 **Conc.:** 0.43 mg/ml

Formulated in: 40 mM Tris-HCl, 110 mM NaCl, 2.2 mM KCl, 300 mM Imidazole, 3 mM DTT and 20% glycerol.

Stability: At least 6 months at -80°C . *Avoid freeze/thaw cycles. Storing diluted enzyme is not recommended.*

References:

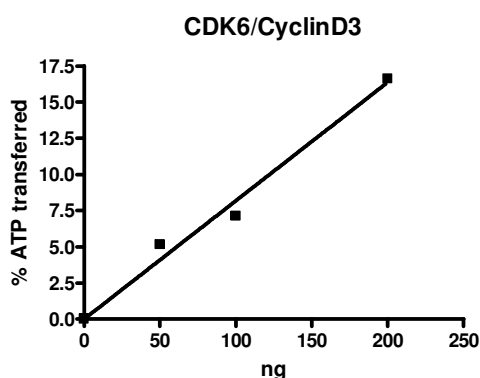
1. Gauduchon J. et al., Int J Cancer. 2008 May 1;122(9):2130-41.
2. Faast R. et al., Oncogene. 2004 Jan 15;23(2):491-502.

Description: Complex of N-terminal His-tagged recombinant full-length human CDK6 (GenBank Accession No. X66365), and N-terminal His tagged, recombinant full length, Cyclin D3. (GenBank Accession No. M90814). Coexpressed in a Baculovirus infected Sf9 cell expression system. CDK6 MW=38 kDa, Cyclin D3 MW=33 kDa.

Specific Activity: 12 pmol/min/ug
 Assay Conditions: Assay was done in a Kinase buffer using Histone H1 (0.1 mg/ml) as a substrate with 20 μM ATP at 30 $^{\circ}\text{C}$ for 60 min. The amount of ATP transferred was calculated using Kinase-Glo reagent (Promega).

Application: Useful for the study of enzyme kinetics, screening inhibitors, and selectivity profiling.

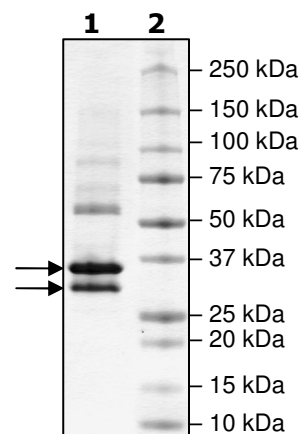
Quality Assurance



**4-20% SDS-PAGE
 Coomassie staining**

Lane 1:
 4 μg CDK6/CyclinD3
Lane 2:
 Protein Marker

MW:
 CDK6: 38 kDa
 CyclinD3: 33 kDa
Purity: $\geq 80\%$



OUR PRODUCTS ARE FOR RESEARCH USE ONLY. NOT FOR DIAGNOSTIC OR THERAPEUTIC USE.

To place your order, please contact us by Phone **1.858.829.3082** Fax **1.858.481.8694**

Or you can Email us at: info@bpsbioscience.com

Please visit our website at: www.bpsbioscience.com