

## Data Sheet

### EPHA4

Human, recombinant, N-terminal GST tag

**Catalog #:** 40193

**Lot #:** 140616      **Conc.:** 0.48 mg/ml

**Formulated in:** 40 mM Tris-HCl, pH 8.0,  
 110 mM NaCl, 2.2 mM KCl, 0.04% Tween-  
 20, 3 mM DTT, 20% glycerol.

**Stability:** >6 months at -80°C. *Avoid freeze/thaw cycles. Storing diluted enzyme is not recommended, if necessary, use carrier protein (BSA 0.1 – 0.5%).*

#### References:

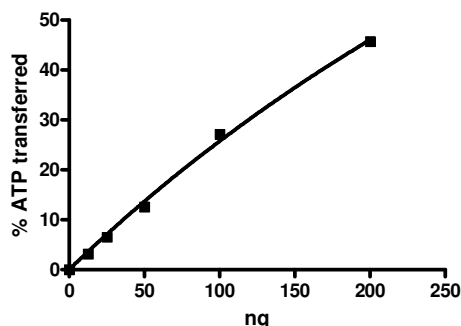
1. Flanagan, J.G., *et al. Ann. Rev. Neurosci.* **21**: 309-345 (1998).
2. Dottori, M., *et al. Proc. Natl. Acad. Sci. USA* **95**: 13248-13253 (1998).

**Description:** Human EPHA4 (Ephrin Receptor A4), also known as TYRO1, SEK, and HEK8, GenBank Accession No. NM\_004438, a.a. 610-887, with N-terminal GST tag, MW = 58 kDa, expressed in Sf9 insect cells via a baculovirus expression system.

**Specific Activity:** 61 pmole/min/μg  
**Assay Conditions:** Assay was done in Kinase buffer containing 0.2 mM DTT using Poly-(Glu4:Tyr)-biotin substrate (0.2 mg/ml) and 20 μM ATP. Reaction was done at 30°C for 40 min. Amount of ATP transferred was calculated using Kinase-Glo reagent (Promega).

**Application:** Useful for the study of enzyme kinetics, screening inhibitors, and selectivity profiling.

## Quality Assurance



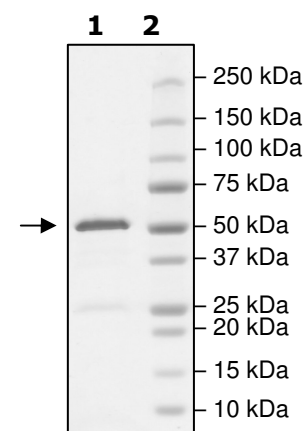
#### 4-20% SDS-PAGE Coomassie staining

**Lane 1:**  
1.8 μg EPHA4

**Lane 2:**  
Protein Marker

**Purity:** ≥90%

**MW:** 58 kDa



OUR PRODUCTS ARE FOR RESEARCH USE ONLY. NOT FOR DIAGNOSTIC OR THERAPEUTIC USE.

To place your order, please contact us by Phone **1.858.829.3082** Fax **1.858.481.8694**

Or you can Email us at: [info@bpsbioscience.com](mailto:info@bpsbioscience.com)

Please visit our website at: [www.bpsbioscience.com](http://www.bpsbioscience.com)



6044 Cornerstone Court W, Ste E  
San Diego, CA 92121  
**Tel:** 1.858.829.3082  
**Fax:** 1.858.481.8694  
**Email:** [info@bpsbioscience.com](mailto:info@bpsbioscience.com)

## ***Sequence***

MSPILGYWKIKGLVQPTRLLEYLEEKYEEHLYERDEGDKWRNKKFELGLEFPNLPYYID  
GDVKLTQSMAIIRYIADKHNMLGGCPKERAEISMLEGAVLDIRYGVSRIAYSKDFETLKVDF  
LSKLP EMLKMFKDRLCHKTYLNGDHVTHPDFMLYDALDVVLYMDPMCLDAFPKLVCFKK  
RIEAIPQIDKYLKSSKYIAWPLQG WQATFGGGDHLEVL FQGPLG SREFAKEIDASCIEK  
VIGVGEFGEVCSGRLKVP GKREICVAIKTLKAGYTDKQRRDFLSEASIMGQFDHPNIIHL  
EGVVTCKPVMITEYMENGLDAFLRKNDGRFTVIQLVGMLRGIGSGMKYLSDMSYVH  
RDLAARNILVNSNLVCKVSDFGMSRVLEDDPEAA YTTTRGGKIPIRWTAPEAIAYRKFTSA  
SDVWSYGIVMWEVMSYGERPYWDM SNQDVKAIEEGYRLPPPMDCPIALHQLMLDCW  
QKERSDRPKFGQIVNMLDKLIRNPNS

**Red:** GST tag

**Blue:** Linker including PreScission Protease Cleavage Site

**Black:** EPHA4 (a.a. 610-887)

OUR PRODUCTS ARE FOR RESEARCH USE ONLY. NOT FOR DIAGNOSTIC OR THERAPEUTIC USE.

To place your order, please contact us by Phone **1.858.829.3082** Fax **1.858.481.8694**

Or you can Email us at: [\*\*info@bpsbioscience.com\*\*](mailto:info@bpsbioscience.com)

Please visit our website at: [\*\*www.bpsbioscience.com\*\*](http://www.bpsbioscience.com)