

Data Sheet

MEK1

Human recombinant, with N-terminal GST-tag

Catalog #: 40123

Lot.#: 111012

Conc.: 0.1 mg/ml

Formulated in: 50 mM Tris-HCl, pH 7.5, 150 mM NaCl, 0.1 mM EDTA, 0.1 mM EGTA, 0.1 mM PMSF, .25 mM DTT, 25% glycerol

Stability: >6 months at -80°C

References:

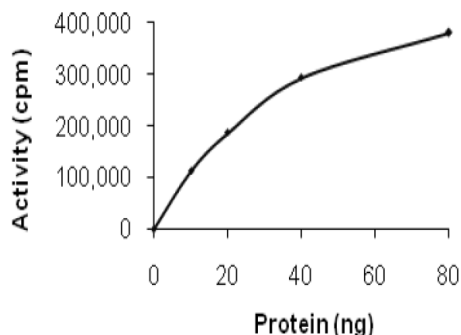
1. Sebolt-Leopold., J.S., et al. *Nature Med.* **5**:810-816 (1999).
2. Seger, R., et al. *FASEB J.* **9**:726-735 (1995).

Description: Recombinant human MEK1, also known as MAP2K1 (MAP [Mitogen-Activated Protein] Kinase Kinase 1), MKK1, or ERK kinase, Genbank Accession #NM_002755, full length, with an N-terminal GST-tag, MW = 72 kDa, expressed in Sf9 cells via a baculovirus expression system.

Specific Activity: 325 pmol/min/μg. Assay conditions: 5 mM MOPS, 2.5 mM β-glycerophosphate, 5 mM MgCl₂, 1 mM EGTA, 0.4 mM EDTA, 0.05 mM DTT, 50 μg/ml BSA, 2 mM ATP, 1 μg/ml inactive ERK1. Incubate MEK1 with 1 mg/ml myelin basic protein as final substrate and [³³P]-ATP at 30°C for 15 minutes, then spot reaction on phosphocellulose paper, fix in 1% phosphoric acid, and assay with a scintillation counter.

Application: Useful for studying enzyme kinetics, screening inhibitors, and selectivity profiling.

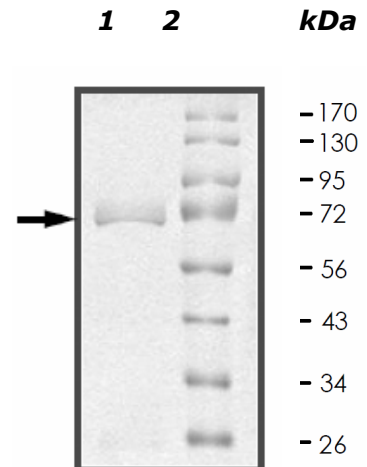
Quality Assurance



10% SDS-PAGE Coomassie staining

Lane 1:
MEK1
Lane 2:
Protein Marker

MW: 72 kDa
Purity: ≥95%



OUR PRODUCTS ARE FOR RESEARCH USE ONLY. NOT FOR DIAGNOSTIC OR THERAPEUTIC USE.

To place your order, please contact us by Phone 1.858.829.3082 Fax 1.858.481.8694

Or you can Email us at: info@bpsbioscience.com

Please visit our website at: www.bpsbioscience.com