

Data Sheet

CDK5/p25 Complex

Human, recombinant, N-terminal GST-tag

Catalog #: 40105

Lot #: 130618-2 **Conc.:** 1.2 mg/ml

Formulated in: 40 mM Tris-HCl, pH 8.0, 110 mM NaCl, 2.2 mM KCl, 4 mM glutathione, 0.04% Tween-20, and 20% glycerol

Stability: At least 6 months at -80°C . Avoid freeze/thaw cycles.

References:

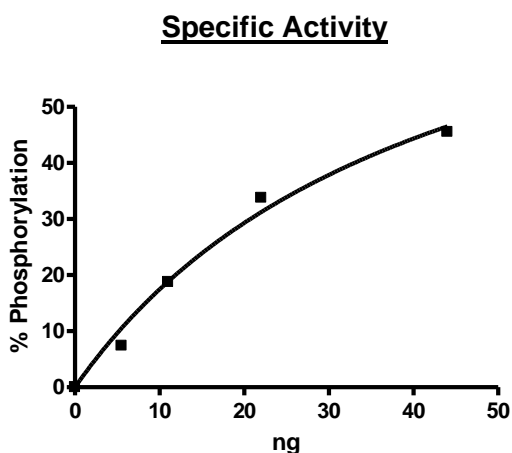
1. Tang, D., *et al.*, *Prog Cell Cycle Res.* 1996;**2**:205-16.
2. Dhavan, R., *et al.*, *Nat Rev Mol Cell Biol.* 2001 Oct;**2(10)**:749-59.

Description: Complex of human **CDK5**, GenBank Accession No. NM_004935, a.a. 1-292(end) with N-terminal GST-tag, MW=60 kDa, and **p25**, GenBank Accession No. NM_003885, a.a. 99-307(end), with N-terminal GST-tag, MW=50 kDa. Co-expressed in a Baculovirus-infected Sf9 cell expression system.

Specific Activity: ≥ 312 pmol/min/ μg
 Assay Conditions: Assay was done in a Kinase buffer using Histone H1 (BPS cat #52043) as a substrate with 20 μM ATP at 30°C for 30 min. The amount of ATP transferred was calculated using Kinase-Glo[®] reagent (Promega).

Application: Useful for three-dimensional structure studies.

Quality Assurance



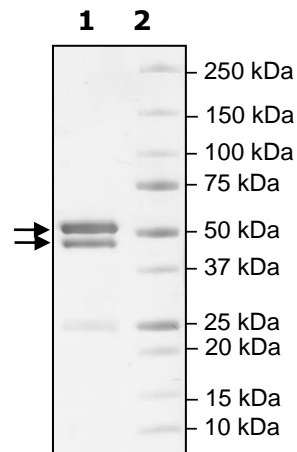
4-20% SDS-PAGE
Coomassie staining

Lane 1:
6 μg CDK5/p25

Lane 2:
Protein Marker

Purity: $\geq 80\%$

MW:
CDK5: 60 kDa
p25: 50 kDa



OUR PRODUCTS ARE FOR RESEARCH USE ONLY. NOT FOR DIAGNOSTIC OR THERAPEUTIC USE.

To place your order, please contact us by Phone **1.858.202.1401** Fax **1.858.481.8694**

Or you can Email us at: info@bpsbioscience.com

Please visit our website at: www.bpsbioscience.com