

## Data Sheet

### CDK2(1-298)/CyclinA2

Human, recombinant, N-terminal His-GST tag

**Catalog #:** 40101

**Lot #:** 110810-20

**Conc.:** 0.59 mg/ml

**Formulated in:** 40 mM Tris-HCl, pH 8.0, 110 mM NaCl, 2.2 mM KCl, 16 mM Glutathione, 3mM DTT, 20% Glycerol.

**Stability:** At least 6 months at  $-80^{\circ}\text{C}$ . Avoid multiple freeze/thaw cycles. Storing diluted enzyme is not recommended, if necessary, use carrier protein (BSA 0.1 – 0.5%).

**References:**

1. Brown NR., *et al. Cell Cycle*. 2007 Jun 1;**6(11)**:1350-9.
2. Hara KT., *et al. Dev Biol*. 2005 Oct 1;**286(1)**:102-13.

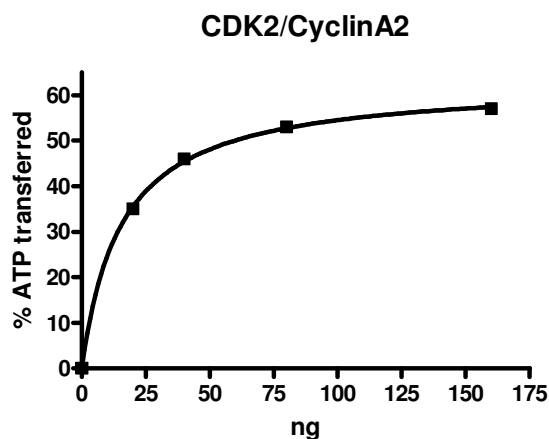
**Description:** Recombinant full-length human CDK2 a.a. 2-298 (end), MW = 61 kDa with N-terminal GST-tag and CyclinA2 a.a. 174-432 (end) with N-terminal His-GST tags, MW = 75 kDa. Both were co-expressed in a baculovirus Sf9 insect cell expression system. The CDK2 gene accession number is NM\_001798 and the CyclinA2 gene accession number is NM\_001237.

**Specific Activity:** 390 pmole/min/ $\mu\text{g}$ .

Assay conditions: Kinase buffer containing 1 mM DTT using Histone H1 (0.1 mg/ml) substrate and 20  $\mu\text{M}$  ATP at  $30^{\circ}\text{C}$  for 30 min. The amount of ATP transferred was calculated using Kinase-Glo reagent (Promega).

**Application:** Useful for the study of enzyme kinetics, screening inhibitors, and selectivity profiling.

### Quality Assurance



### 10% SDS-PAGE Coomassie staining

**Lane 1:**  
CyclinA2

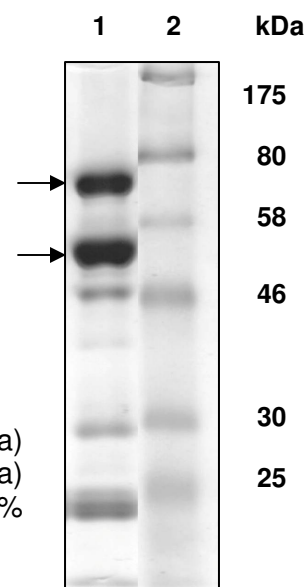
CDK2

**Lane 2:**  
Protein Marker

**MW:** Cyclin A2 (75 kDa)

CDK2 (61 kDa)

**Purity:**  $\geq 64\%$



OUR PRODUCTS ARE FOR RESEARCH USE ONLY. NOT FOR DIAGNOSTIC OR THERAPEUTIC USE.

To place your order, please contact us by Phone **1.858.829.3082** Fax **1.858.481.8694**

Or you can Email us at: [info@bpsbioscience.com](mailto:info@bpsbioscience.com)

Please visit our website at: [www.bpsbioscience.com](http://www.bpsbioscience.com)