

Data Sheet

CaMK2 α

Human recombinant, with N-terminal GST-tag
Catalog #: 40038
Lot #: 110818 **Conc.:** 0.1 mg/ml

Formulated in: 50 Tris-HCl, pH 7.5, 150 mM NaCl, 0.1 mM PMSF, 0.1 mM EDTA, 0.1 mM EGTA, 25% glycerol, and 0.25 mM DTT.

Stability: >6 months at -80°C

References:

1. Silva, A J. *et al: Science* **257**: 206-211, 1992.
2. Thiagarajan, T C. *et al: Neuron*. **36**: 1103-1114, 2002.

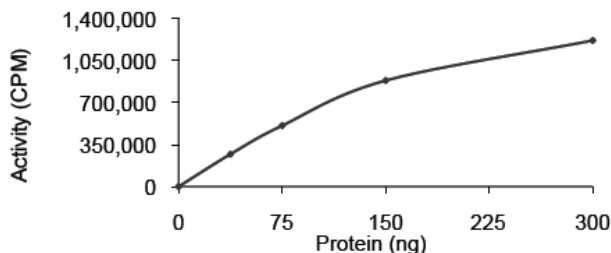
Description: Recombinant human calcium/calmodulin-dependent protein kinase II alpha (CaMK2 α), Genbank Accession No. NM_171825, full length, with an N-terminal GST-tag, MW = 74 kDa, expressed in Sf9 cells via a baculovirus expression system.

Specific Activity: 294 pmol/min/ μ g.

Assay conditions: 5 mM MOPS, 2.5 mM β -glycerophosphate, 5 mM MgCl₂, 1 mM EGTA, 0.4 mM EDTA, 0.05 mM DTT, 50 μ g/ml BSA, 2 mM ATP. 0.5 mM CaCl₂, 0.03 mg/ml calmodulin. Incubate CaMK2 α with 0.3 mg/ml autocamtide-2 peptide as substrate and [³³P]-ATP at 30°C for 15 minutes, then spot reaction on phosphocellulose paper, fix in 1% phosphoric acid, and assay with a scintillation counter.

Application: Useful for studying enzyme kinetics, screening inhibitors, and selectivity profiling.

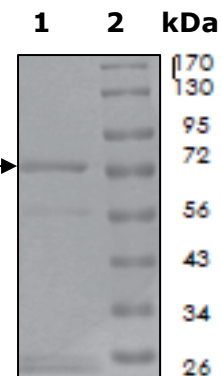
Quality Assurance



**10% SDS-PAGE
Coomassie staining**

Lane 1: CaMK2 α
Lane 2: Protein Marker

MW: 74 kDa
Purity: \geq 80%



OUR PRODUCTS ARE FOR RESEARCH USE ONLY. NOT FOR DIAGNOSTIC OR THERAPEUTIC USE.

To place your order, please contact us by Phone **1.858.829.3082** Fax **1.858.481.8694**
 Or you can Email us at: info@bpsbioscience.com
 Please visit our website at: www.bpsbioscience.com