

## Data Sheet

### PLK1, His-Tag

Human, Recombinant, C-terminal His tag  
**Catalog #:** 40033  
**Lot:** 170315      **Conc.:** 1.0 mg/ml

**Formulated in:** 40 mM Tris-HCl pH 8.0, 110 mM NaCl, 2.2 mM KCl, 0.04% Tween-20, 20% glycerol and 250 mM Imidazole.

**Stability:** At least 6 months at -80°C. Avoid freeze/thaw cycles.

**References:**

1. Fabbro, M. *et al.*, *Dev. Cell* **9** (4), 477-488. (2005)
2. Liu, X., *et al.*, *Mol. Cell. Biol.* **25**, 4993-5010 (2005)

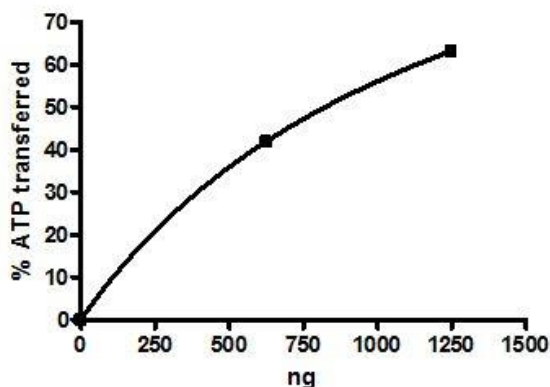
**Description:** Human Plk1 also known as STPK13 and polo-like kinase 1, GenBank Accession No. NM\_005030, a.a. full length with C-terminal His-tag, expressed in a Baculovirus infected Sf9 cell expression system. MW=69 kDa.

**Specific Activity:** ≥14 pmol/min/μg  
 Assay Conditions: 40 mM Tris-HCl pH 7.4, 20 mM MgCl<sub>2</sub>, 0.1 mg/mL BSA and 1 mM DTT using 1 mg/ml Casein substrate and 20 μM ATP. Reaction was done at 30°C for 45 min. Amount of ATP transferred was calculated using Kinase-Glo reagent from Promega.

**Application:** Useful for the study of enzyme kinetics, screening inhibitors, and selectivity profiling.

## Quality Assurance

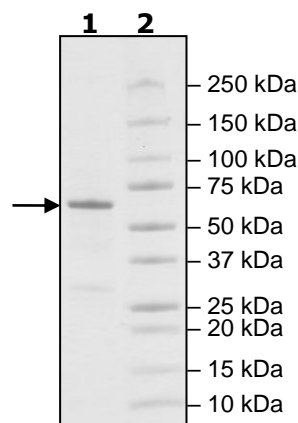
### Specific Activity



### 4-20% SDS-PAGE Coomassie staining

**Lane 1:**  
2 μg PLK1  
**Lane 2:**  
Protein Marker

**MW:** 69 kDa  
**Purity:** ≥83%



OUR PRODUCTS ARE FOR RESEARCH USE ONLY. NOT FOR DIAGNOSTIC OR THERAPEUTIC USE.

To place your order, please contact us by Phone **1.858.202.1401** Fax **1.858.481.8694**  
 Or you can Email us at: [info@bpsbioscience.com](mailto:info@bpsbioscience.com)  
 Please visit our website at: [www.bpsbioscience.com](http://www.bpsbioscience.com)