

Data Sheet

STK3(MST2)

Human, recombinant, N-terminal GST-tag

Catalog #: 40013

Lot#: 101012 **Conc.:** 0.27 mg/ml

Formulated in: 45 mM Tris-HCl, pH 8.0, 124 mM NaCl, 2.4 mM KCl, 3 mM DTT, 18 mM glutathione, and 10% glycerol.

Stability: >6 months at -80°C

References:

1. Taylor, L.K., *et al.* (1996). *Proc. Natl. Acad. Sci. USA.* **93(19)**:10099-104.
2. Song, H., *et al.* (2010). *Proc. Natl. Acad. Sci. USA.* **107(4)**:1431-6.
3. Kim, D., *et al.* (2010). *PLoS One* **5(3)**:e9616.

Description:

Human STK3 (serine/threonine kinase 3), also known as MST-2 (Mammalian STE20-like protein kinase 2) or KRS1, GenBank Accession No. NM_006281, a.a. 2-492(end), with N-terminal GST-tag, MW=78.4 kDa, expressed in Sf9 insect cells via a baculovirus expression system.

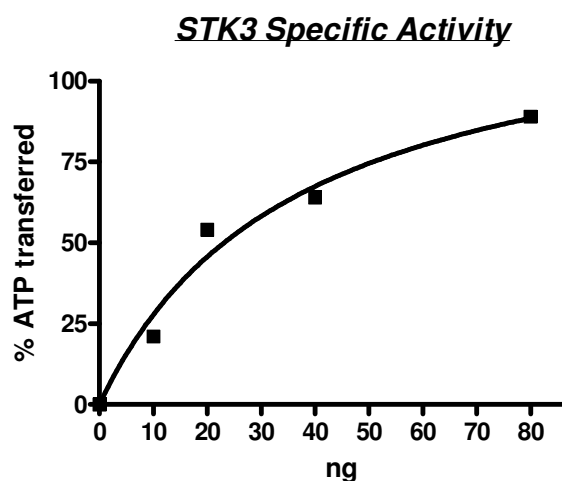
Specific Activity: 31 pmole/min/μg.

Enzyme reaction is conducted in a buffer containing 50 mM HEPES (pH 7.5), 10 mM MgCl₂, 1 mM EGTA, 200 μM ATP, 0.01% Brij-35 and 2 μM substrate (Ser/Thr Peptide 7, Invitrogen) at 30°C for 1 hour.

Application:

Useful for the study of enzyme kinetics, screening inhibitors, and selectivity profiling.

Quality Assurance

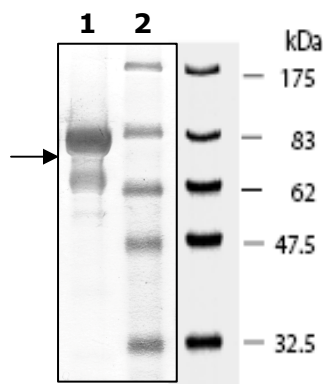


**10% SDS-PAGE
Coomassie staining**

Lane 1:
5 μg STK3

Lane 2:
Protein Marker
BioLabs (#P7708L)

MW: 53.4 kDa
Purity: ≥41%



OUR PRODUCTS ARE FOR RESEARCH USE ONLY. NOT FOR DIAGNOSTIC OR THERAPEUTIC USE.

To place your order, please contact us by Phone **1.858.829.3082** Fax **1.858.481.8694**
 Or you can Email us at: info@bpsbioscience.com
 Please visit our website at: www.bpsbioscience.com