

Data Sheet

c-RAF/RAF1, GST-Tag

Human, Recombinant, N-terminal GST-tag
Catalog #: 40008
Lot #: 180611-G1 **Conc.:** 0.17 mg/ml

Formulated in: 40 mM Tris-HCl, pH 8.0,
 110 mM NaCl, 2.2 mM KCl, 3 mM DTT
 and 20% Glycerol.

Stability: At least 12 months at -80°C.
 Avoid freeze/thaw cycles. Protein may
 be diluted to $\geq 100 \mu\text{g/ml}$ in PBS +
 glycerol and stored at -80°C.

References:

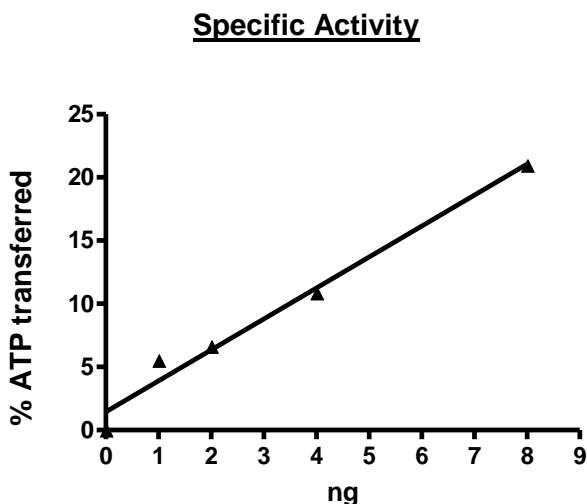
1. Lamberti, A. *et al. Cell Death Differ.* **14(5)**,952-962 (2007)
2. Yu, F. *et al. PLoS Pathog.* **3(3)**, E44 (2007)

Description: Human RAF1, also known as c-RAF (GenBank Accession No. NM_002880), amino acids 306-648, containing the mutations Y340D and Y341D, MW=65 kDa, expressed in a Baculovirus infected Sf9 cell expression system.

Specific Activity: $\geq 200 \text{ pmol/min}/\mu\text{g}$
 Assay condition: Assay was done in a Kinase buffer containing 1 mM DTT using MEK1 (0.1 mg/ml) as a substrate with 5 μM ATP at 30°C for 30 min. The amount of ATP transferred was calculated using Kinase-Glo reagent (Promega).

Application: Useful for the study of enzyme kinetics, screening inhibitors, and selectivity profiling.

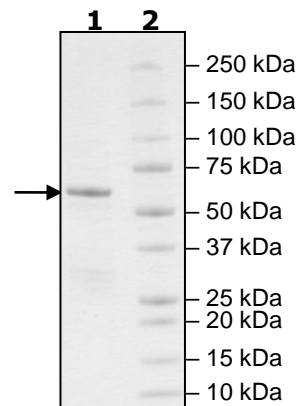
Quality Assurance



**4-20% SDS-PAGE
Coomassie staining**

Lane 1:
2 μg cRAF
Lane 2:
Protein Marker

MW: 65 kDa
Purity: $\geq 75\%$



OUR PRODUCTS ARE FOR RESEARCH USE ONLY. NOT FOR DIAGNOSTIC OR THERAPEUTIC USE.

To place your order, please contact us by Phone **1.858.829.3082** Fax **1.858.481.8694**
 Or you can Email us at: info@bpsbioscience.com
 Please visit our website at: www.bpsbioscience.com



6042 Cornerstone Court West, Suite B
San Diego, CA 92121

Tel: 1.858.829.3082

Fax: 1.858.481.8694

Email: info@bpsbioscience.com

OUR PRODUCTS ARE FOR RESEARCH USE ONLY. NOT FOR DIAGNOSTIC OR THERAPEUTIC USE.

To place your order, please contact us by Phone **1.858.829.3082** Fax **1.858.481.8694**

Or you can Email us at: info@bpsbioscience.com

Please visit our website at: www.bpsbioscience.com