

Data Sheet

RPTPy

Human, recombinant, N-terminal GST tag

Catalog #: 30047

Lot #: 140911

Conc.: 1.0 mg/ml

Formulated in: 25 mM Tris pH8.0, 75 mM NaCl, 0.05% Tween-20, 2 mM EDTA, 10 mM Glutathione, 50% Glycerol and 1 mM DTT.

Stability: >6 months at -80°C . Avoid freeze/thaw cycles. Storing diluted enzyme is not recommended, if necessary, use carrier protein (BSA 0.1 – 0.5%).

References:

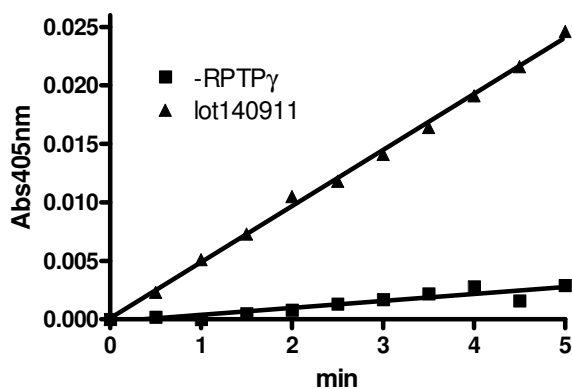
1. C. Van Niekerk and L. Poels *Cancer Lett.* 1999, 137: 61
2. S. Liu, et al., *Anticancer Res.* 2002, 22:3917

Description: Human receptor-like protein tyrosine phosphatase gamma (RPTPy), also known as PTPRG, PTPG, catalytic domain, a.a. 801-1147 with N-terminal GST-tag, MW = 65.6, expressed in an *E. coli* expression system.

Specific Activity: 560 pmole/min/ μg .
 Assay Conditions: 20 mM HEPES, pH 7.2, 2 mM EDTA, 1 mM DTT, and 50 mM pNPP. Reaction was done at RT for 5 min, and monitored at Abs405 nm continuously. (Path length is estimated to 0.5 cm) ϵ of pNPP = $18,000 \text{ M}^{-1}\text{cm}^{-1}$

Application: Useful for the study of enzyme kinetics, regulation, to dephosphorylate target substrates and for screening inhibitors.

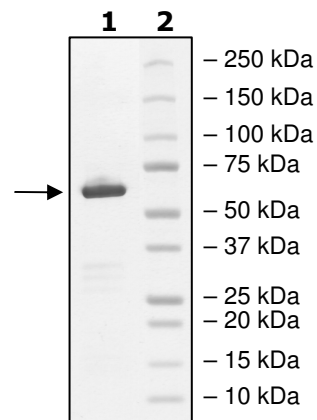
Quality Assurance



**4-20% SDS-PAGE
 Coomassie staining**

Lane 1:
 2 μg RPTPy
Lane 2:
 Protein Marker

MW: 66.4 kDa
Purity: $\geq 90\%$



OUR PRODUCTS ARE FOR RESEARCH USE ONLY. NOT FOR DIAGNOSTIC OR THERAPEUTIC USE.

To place your order, please contact us by Phone **1.858.829.3082** Fax **1.858.481.8694**
 Or you can Email us at: info@bpsbioscience.com
 Please visit our website at: www.bpsbioscience.com