

Data Sheet

PRL2

Human, recombinant, N-terminal HIS tag

Catalog #: 30001

Lot#: 90604 **Conc.:** 2.1 mg/ml

Formulated in: 40 mM Tris-HCl, pH 8.0,
 110 mM NaCl, 2.2mM KCl, 20% glycerol,
 and 3 mM DTT.

Stability: >6 months at -80 °C

References:

1. Dumauval C.M. *et al.*, *J. Histochem. Cytochem.* **54** (12), 1401-1412 (2006).
2. Radke I. *et al.*, *Br. J. Cancer.* **95** (3), 347-354 (2006).

Description:

Human PRL 2 (GenBank Accession No. NM_080391), (a-a 2-167) with N-terminal HIS tag, MW = 19.1 kDa, expressed in an *E. coli* expression system.

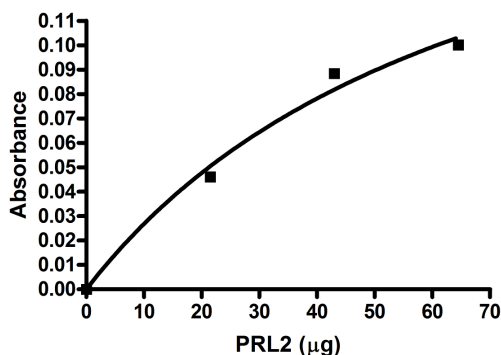
Specific Activity: 0.334 pmol/min/μg,
 Assay conditions: enzyme was incubated in 50mM Tris pH7.4, 150mM NaCl 5mM DTT, and 12.5mM PNPP as a substrate for 2h at 37°C. Absorbance was read by Tecan spectrophotometer at 405 nm wavelength.

Application:

Useful for the study of enzyme kinetics, screening inhibitors, and selectivity profiling.

Quality Assurance

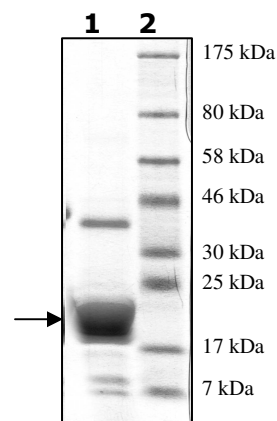
PRL2 Specific Activity



4-20% SDS-PAGE
 Coomassie staining

Lane 1:
 5 μg PRL2
Lane 2:
 Protein Marker
 BioLabs (#P7708L)

MW: 19.1 kDa
Purity: >75%



OUR PRODUCTS ARE FOR RESEARCH USE ONLY. NOT FOR DIAGNOSTIC OR THERAPEUTIC USE.

To place your order, please contact us by Phone **1.858.829.3082** Fax **1.858.481.8694**

Or you can Email us at: info@bpsbioscience.com

Please visit our website at: www.bpsbioscience.com