

Data Sheet

MET (del 963-1009), GST-tag

Human, Recombinant, N-terminal GST-tag
Catalog #: 100643
Lot #: 200213 **Conc.:** 0.1 mg/ml

Formulated in: 50 mM Tris-HCl, pH 7.5,
 150 mM NaCl, 10 mM glutathione, 0.25 mM
 DTT, 0.1 mM EDTA, 0.1 mM PMSF, 25%
 glycerol.

Stability: At least 6 months at -80°C. *Avoid freeze/thaw cycles.*

References:

1. Giordano, S. *et al*, *Oncogene* (11): 1383-8, 1989.
2. Iyer, A. *et al*, *Cell Growth Differ.* 1(2): 87-95, 1990.

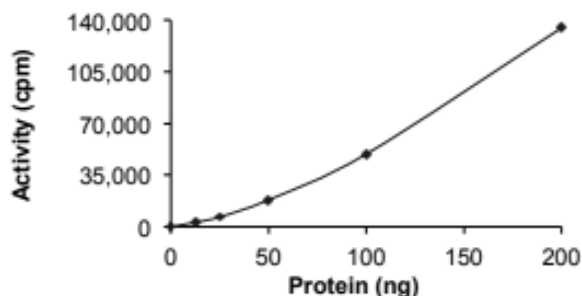
Description: Human MET, also known as Proto-Oncogene c-Met, HGF Receptor (HGFR), AUTS9 and SF Receptor, GenBank Accession No. NM_000245, a.a. 956-1390(end) with deletion a.a. 963-1009 (exon 14) and N-terminal GST-tag, expressed in a Baculovirus infected Sf9 cell expression system. MW=71 kDa.

Specific Activity: ≥35 pmol/min/μg

Applications: Useful for the study of enzyme kinetics, screening inhibitors, and selectivity profiling.

Quality Assurance

Specific Activity



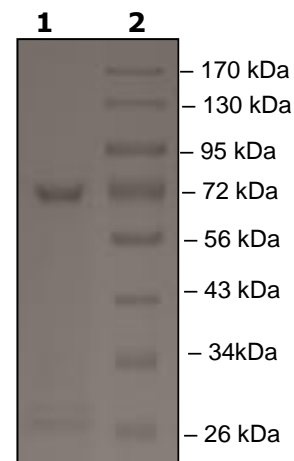
4-20% SDS-PAGE Coomassie staining

Lane 1:
MET(del 963-1009)

Lane 2: →
Protein Marker

Purity: ≥85%

MW: 71 kDa



OUR PRODUCTS ARE FOR RESEARCH USE ONLY. NOT FOR DIAGNOSTIC OR THERAPEUTIC USE.

To place your order, please contact us by Phone **1.858.202.1401** Fax **1.858.481.8694**

Or you can Email us at: info@bpsbioscience.com

Please visit our website at: www.bpsbioscience.com