

Data Sheet

IDO1, His-tag

Human, Recombinant, N-terminal His-tag

Catalog #: 71182

Lot #: 180305-C **Conc.:** 1.26 mg/ml

Formulated in: 40 mM Tris-HCl, pH 8.0,
110 mM NaCl, 2.2 mM KCl, 20% glycerol

Stability: At least 6 months at -80°C . Avoid freeze/thaw cycles. Storing diluted protein is not recommended, if necessary, use carrier protein (BSA 0.1 – 0.5%).

References:

1. Lob, S. *et al.*, *Cancer Immunol. Immunother.* 2009; **58(1)**: 153-157.
2. Liu, X. *et al.*, *Blood.* 2010; **115(17)**: 3520-3530.
3. Flick, H.E., *et al.*, *Int. Nat. J. of Tryptophan Res.* 2013; **6**: 35-45.

Description:

Human IDO1, also known as Indoleamine 2,3-dioxygenase 1, GenBank Accession No. NM_002164, a.a. 2-403(end) with an N-terminal His-tag, expressed in an *E. coli* cell expression system. MW = 46 kDa.

Assay Description:

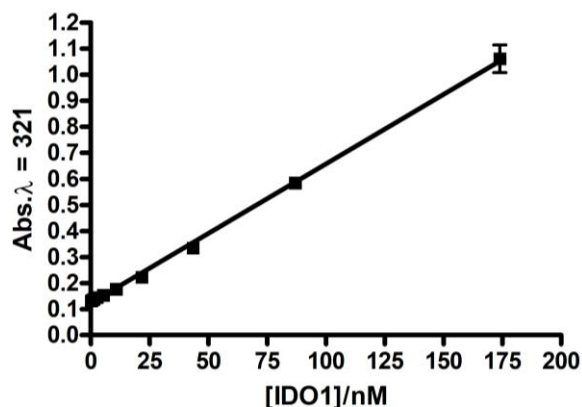
IDO1 activity was confirmed using the IDO1 Inhibitor Screening Assay Kit (BPS Cat. #72021) and following the protocol provided with the kit.

Application:

Useful for studying enzyme kinetics, substrate specificity, and screening inhibitors.

Quality Assurance

Specific Activity

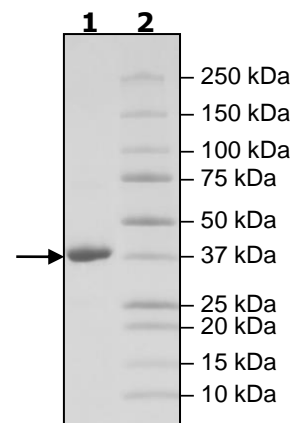


4-20% SDS-PAGE Coomassie staining

Lane 1:
2 μg IDO1

Lane 2:
Protein Marker

MW: 46 kDa
Purity: ≥90%



OUR PRODUCTS ARE FOR RESEARCH USE ONLY. NOT FOR DIAGNOSTIC OR THERAPEUTIC USE.

To place your order, please contact us by Phone **1.858.829.3082** Fax **1.858.481.8694**

Or you can Email us at: info@bpsbioscience.com

Please visit our website at: www.bpsbioscience.com



6042 Cornerstone Court W, Ste B
San Diego, CA 92121
Tel: 1.858.829.3082
Fax: 1.858.481.8694
Email: info@bpsbioscience.com

Sequence

MHHHHHAHAMENSWTISKEYHIDEEVGFALPNPQENLPDFYNDWMFIAKHLPLDIES
GQLRERVEKLNMLSIDHLTDHKSQRLARLVLCITMAYVWVGKGGDVRKVLPRNIAV
PYCQLSKKLELPPILVYADCVLANWKKKDPNKPLTYENMDVLFSDGDCSKGFFLV
SLLVEIAAASAIVPTVFKAMQMQRDTLLKALLEIASCLEKALQVFHQIHDHVNPKA
FFSVLRIYLSGWKGNPQLSDGLVYEGFWEDPKEFAGGSAGQSSVFQCFDVLLGIQQT
AGGGHAAQFLQDMRRYMPPAHRNFLCSLESNPSVREFVLSKGDAGLREAYDACVK
ALVSLRSYHLQIVTKYILIPASQQPKENKTSKLEAKGTGGTDLNFKTVRSTTE
KSLLEK

Black: IDO1 (a.a. 2-403(end))

Red: 6x His including first M

OUR PRODUCTS ARE FOR RESEARCH USE ONLY. NOT FOR DIAGNOSTIC OR THERAPEUTIC USE.

To place your order, please contact us by Phone **1.858.829.3082** Fax **1.858.481.8694**

Or you can Email us at: info@bpsbioscience.com

Please visit our website at: www.bpsbioscience.com