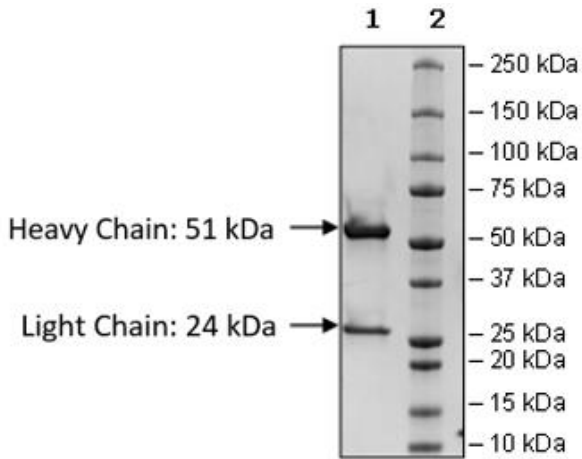


Product Information

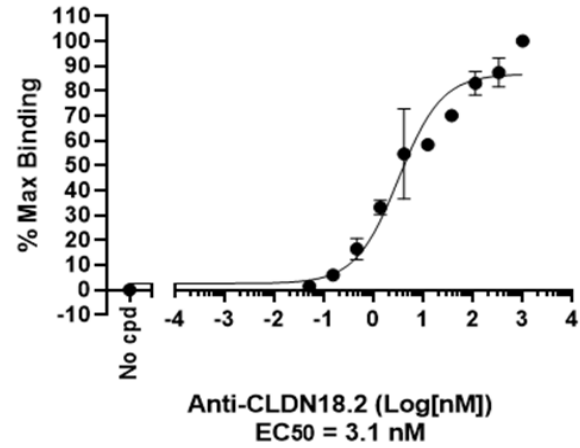
| | |
|---------------------------|--|
| Description: | Biotinylated anti-Claudin-18 isoform 2 (CLDN18.2) IgG1 antibody is a purified recombinant antibody that recognizes human CLDN18.2 antigen. This antibody has been tested for specific binding to purified human CLDN18.2 protein. |
| Label: | This protein is enzymatically biotinylated using Avi-Tag™ technology. Biotinylation is confirmed to be ≥90%. |
| Concentration: | 0.40 mg/ml |
| Species: | Human |
| Isotype: | IgG1 |
| Formulation: | 8 mM phosphate, pH 7.4, 110 mM NaCl, 2.2 mM KCl, and 20% glycerol |
| Expression System: | Heavy chain (HC) and Light chain (LC) co-expressed in HEK293 |
| Purification: | Protein A affinity |
| Format: | Aqueous buffer solution |
| Stability: | At least 12 months at -80°C. Avoid freeze/thaw cycles. |
| Storage: | -80°C |
| MW: | Total: 150 kDa; Light Chain: 24 kDa; Heavy Chain: 51 kDa |
| Purity: | ≥90% |
| Assay Conditions: | <p>Functional validation: The antibody was validated by measuring anti-CLDN18.2 binding to CLDN18.2 antigen in ELISA. The CLDN18.2 protein was coated onto a 96-well plate overnight at 4°C (50 µl/well at a concentration of 2 µg/ml in PBS). The plate was washed 3 times with Immuno Buffer 1 (BPS Bioscience #79311) and blocked using 100 µl of Blocking Buffer 2 (BPS Bioscience #79728) with DDM/CHS detergent (dodecyl-β-D-maltoside (DDM) 0.05%, cholesteryl hemisuccinate (CHS) 0.01%) for 1 hour at room temperature. After removing the blocking buffer, 50 µl/well of purified biotinylated anti-CLDN18.2 antibody (BPS Bioscience #101565), serially diluted in Blocking Buffer 2 with DDM/CHS detergent, was added for 60 minutes at room temperature. After 3 more washes, the plate was incubated with Streptavidin-HRP, washed, and incubated with colorimetric HRP substrate. The reaction was stopped, and absorbance was read at 450 nm. The Blank value was subtracted from all values.</p> <p>Flow cytometry validation: One million cells were stained with 1 µg of biotinylated anti-CLDN18.2 IgG for 30 minutes on ice, washed three times, stained with Streptavidin PE Conjugate (ThermoFisher #12-4317-87) for 30 minutes on ice, washed three times, and analyzed by flow cytometry. CLDN18.2 CHO cells (green) were compared to parental CHO-K1 cells (blue). Y-axis is the cell count. X-axis is PE intensity.</p> |
| Applications: | This product is for research use only. It is not suitable for human diagnostic or therapeutic use. |

Quality Control Data

4-20% SDS-PAGE Coomassie Staining



CLDN18.2: Anti-CLDN18.2-Biotin Binding Assay



Cell surface staining of CLDN18.2 in CLDN18.2 CHO Cell Line, measured by flow cytometry

