

## Data Sheet

### LILRB2, Avi-His-Tag, Biotin-labeled

Human, Recombinant, C-terminal Avi-His-Tag,  
Biotin-labeled

**Catalog #:** 100335

**Lot#:** 190403

**Conc.:** 1.8 mg/ml

**Formulated in:** 8 mM phosphate, pH 7.4,  
110 mM NaCl, 2.2 mM KCl, and 20%  
glycerol.

**Stability:** At least 6 months at  $-80^{\circ}\text{C}$ . *Avoid  
freeze/thaw cycles.*

#### References:

1. Shiroishi, M., *et al.*, *PNAS*. Oct  
2006;**103(44)**: 16412-16417.
2. Taecho, K., *et al.*, *Science*. Sep  
2013; **341(6152)**: 1399-1404.

**Description:** Human LILRB2, also known  
as Leukocyte immunoglobulin-like receptor  
subfamily B member 2, GenBank Accession  
No. NM\_005874, a.a 22-458, with C-  
terminal Avi-His-Tag and expressed in a  
HEK293 cell expression system. This  
protein is enzymatically biotinylated using  
Avi-Tag™ technology. Biotinylation is  
confirmed to be  $\geq 90\%$ . MW = 52 kDa. This  
protein runs at a higher molecular weight  
due to glycosylation.

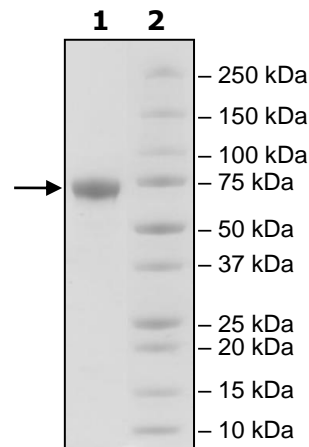
### Quality Assurance

#### 4-20% SDS-PAGE Coomassie staining

**Lane 1:**

4  $\mu\text{g}$  LILRA1

**Lane 2:**  
Protein Marker



**MW:**  
52 kDa+glycans

**Purity:**  $\geq 90\%$

OUR PRODUCTS ARE FOR RESEARCH USE ONLY. NOT FOR DIAGNOSTIC OR THERAPEUTIC USE.

To place your order, please contact us by Phone **1.858.202.1401**. Fax **1.858.481.8694**

Or you can Email us at: [info@bpsbioscience.com](mailto:info@bpsbioscience.com)

Please visit our website at: [www.bpsbioscience.com](http://www.bpsbioscience.com)