

Data Sheet

Mesothelin, Avi-His-Tag

Human, Recombinant, C-terminal Avi-His-tag

Catalog#: 100290

Lot#: 190220-1

Conc.: 1.91 mg/ml

Formulated in: 8 mM phosphate, pH 7.4, 110 mM NaCl, 2.2 mM KCl, and 20% glycerol.

Stability: At least 6 months at -80°C . Avoid freeze/thaw cycles.

Description:

Human Mesothelin, also known as MSLN, MPF, SMRP, GenBank Accession No. NM_005823, a.a. 296–580 with C-terminal Avi-His-tag, expressed in a HEK293 cell expression system. MW = 35 kDa. This protein runs at a higher MW by SDS-PAGE due to glycosylation.

References:

1. Robinson, B, W.S. *et al.*, *The Lancet*. 2003; **362(9396)**: 1612-1616.
2. Chang, K. *et al.*, *PNAS*. 1996; **93(1)**: 136-140.

Quality Assurance

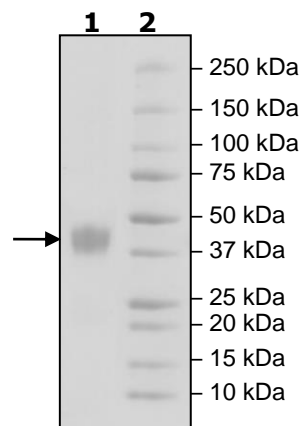
4-20% SDS-PAGE Coomassie staining

Lane 1:
4 μg Mesothelin

Lane 2:
Protein Marker

MW:
35 kDa+glycans

Purity: $\geq 90\%$



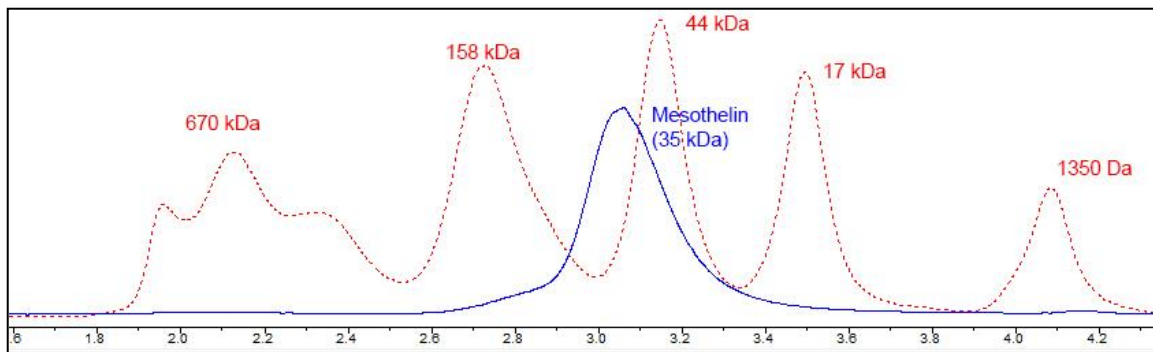
OUR PRODUCTS ARE FOR RESEARCH USE ONLY. NOT FOR DIAGNOSTIC OR THERAPEUTIC USE.

To place your order, please contact us by Phone **1.858.202.1401** Fax **1.858.481.8694**

Or you can Email us at: info@bpsbioscience.com

Please visit our website at: www.bpsbioscience.com

Gel Filtration



<10% Aggregation

OUR PRODUCTS ARE FOR RESEARCH USE ONLY. NOT FOR DIAGNOSTIC OR THERAPEUTIC USE.

To place your order, please contact us by Phone **1.858.202.1401** Fax **1.858.481.8694**
Or you can Email us at: info@bpsbioscience.com
Please visit our website at: www.bpsbioscience.com