

## Data Sheet

### LILRB4, Avi-His-Tag

Human, Recombinant, C-terminal Avi-His-Tag

**Catalog #:** 100236

**Lot#:** 181107

**Conc.:** 0.31 mg/ml

**Formulated in:** 8mM phosphate, pH7.4, 110mM NaCl, 2.2mM KCl, and 20% glycerol.

**Stability:** At least 6 months at  $-80^{\circ}\text{C}$ . Avoid freeze/thaw cycles.

#### References:

1. Brown, D., *et al.*, *BMC Immunology*. 2009 Oct 2009; **10(56)**: 1924-1937.
2. Cheng, H., *et al.*, *J Biol Chem*. May 2011; **286(20)**: 18013-25.

#### Description:

Human LILRB4, also known as leukocyte immunoglobulin like receptor B4, and CD85K, GenBank Accession No. NM\_001278426, a.a 17-257, with C-terminal Avi-His-Tag™, expressed in a HEK293 cell expression system. MW = 31 kDa.

### Quality Assurance

#### 4-20% SDS-PAGE Coomassie staining

**Lane 1:**

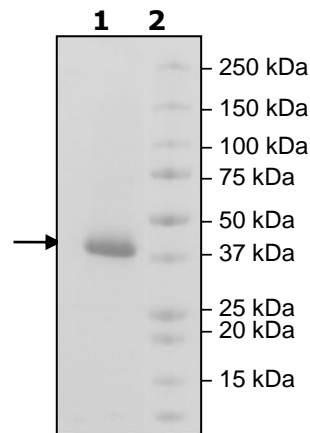
4 $\mu\text{g}$ LILRB4

**Lane 2:**

Protein Marker

**MW:** 31kDa

**Purity:**  $\geq 90\%$



OUR PRODUCTS ARE FOR RESEARCH USE ONLY. NOT FOR DIAGNOSTIC OR THERAPEUTIC USE.

To place your order, please contact us by Phone **1.858.829.3082** Fax **1.858.481.8694**

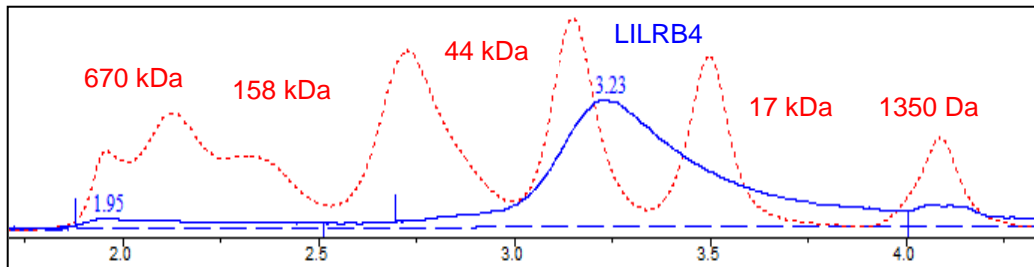
Or you can Email us at: [info@bpsbioscience.com](mailto:info@bpsbioscience.com)

Please visit our website at: [www.bpsbioscience.com](http://www.bpsbioscience.com)



6042 Cornerstone Court W, Ste B  
San Diego, CA 92121  
**Tel:** 1.858.829.3082  
**Fax:** 1.858.481.8694  
**Email:** info@bpsbioscience.com

**Gel Filtration Curve**



<10% Aggregation

OUR PRODUCTS ARE FOR RESEARCH USE ONLY. NOT FOR DIAGNOSTIC OR THERAPEUTIC USE.

To place your order, please contact us by Phone **1.858.829.3082** Fax **1.858.481.8694**  
Or you can Email us at: [info@bpsbioscience.com](mailto:info@bpsbioscience.com)  
Please visit our website at: [www.bpsbioscience.com](http://www.bpsbioscience.com)