

Data Sheet

WDR5, FLAG-tag

Human, recombinant, N-terminal FLAG-tag

Catalog #: 511111

Lot #: 150904-1 **Conc.:** 0.16 mg/ml

Formulated in: 40 mM Tris-HCl, pH 8.0,
110 mM NaCl, 2.2 mM KCl, 0.04% Tween-
20, 20% glycerol, 80 µg/ml FLAG peptide

Stability: At least 6 months at -80°C. *Avoid freeze/thaw cycles. Storing diluted enzyme is not recommended.*

References:

1. Trievel, R.C., Shilatifard, A. (2009). *Nature Struct. Mol. Biol.* **16 (7):** 678-80.
2. Wang, Y.Y., *et al.* (2010). *Proc. Natl. Acad. Sci. USA* **107(2):**815-20.
3. Odho, Z., *et al.* (2010). *J. Biol. Chem.* **285(43):**32967-76.

Description:

Human WDR5 (WD Repeat Domain 5), also known as SWD3 or BIG-3, GenBank Accession No. NM_017588, a.a. 2-334(end), with N-terminal FLAG-tag, MW=37 kDa, expressed in a baculovirus-infected Sf9 insect expression system.

Application:

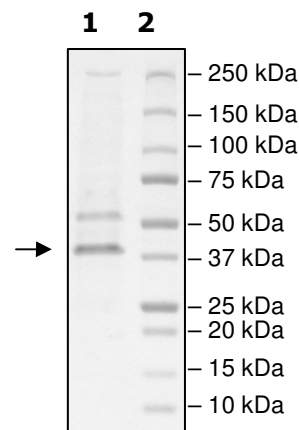
Useful for the study of enzyme kinetics, screening inhibitors, and selectivity profiling.

Quality Assurance

**6-20% SDS-PAGE
Coomassie staining**

Lane 1:
1.8 µg WDR5
Lane 2:
Protein Marker

Purity: ≥67%
MW: 37 kDa



OUR PRODUCTS ARE FOR RESEARCH USE ONLY. NOT FOR DIAGNOSTIC OR THERAPEUTIC USE.

To place your order, please contact us by Phone **1.858.829.3082** Fax **1.858.481.8694**

Or you can Email us at: info@bpsbioscience.com

Please visit our website at: www.bpsbioscience.com