

Data Sheet

EZH2/SUZ12/RbAP48 Complex

Human, recombinant

Catalog #: 51098

Lot#: 120719

Conc.: 0.51 mg/ml

Formulated in: 45 mM Tris-HCl, pH 8.0, 30 mM NaCl and 10% Glycerol.

Stability: >6 months at -80°C

References:

1. Varambally, S. *et al. Science* **322** (5908), 1695-1699 (2008).
2. Rakotobe, D. *et al., Virol. J.* **5**, 32 (2008).

Description:

Complex of human EZH2 (GenBank Accession No. NM_004456) a.a. 2-end with N-terminal His-GST tag, MW= 114 kDa, human SUZ12 (NM_015355) a.a. 1-end with N-terminal His tag, MW = 87 kDa, and human RbAp48 (NM_005610) a.a. 2-end with N-terminal His tag, MW = 48 kDa. Co-expressed in baculovirus expression system.

Application:

Useful for Western blot analysis and to investigate protein-protein interactions in the EZH2 complex.

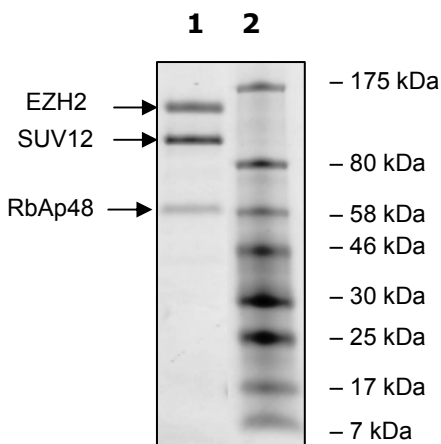
Quality Assurance

4-20% SDS-PAGE Coomassie staining

Lane 1:
3 µg complex

Lane 2:
Protein Marker
BioLabs (#P7708L)

Purity: ≥80%



OUR PRODUCTS ARE FOR RESEARCH USE ONLY. NOT FOR DIAGNOSTIC OR THERAPEUTIC USE.

To place your order, please contact us by Phone **1.858.829.3082** Fax **1.858.481.8694**

Or you can Email us at: info@bpsbioscience.com

Please visit our website at: www.bpsbioscience.com