

Data Sheet

SetDB1

Human, recombinant, N-terminal His-GST-tag

Catalog#: 51055

Lot#: 141107

Conc.: 0.05 mg/ml

Formulated in: 40 mM Tris-HCl, pH 8.0, 110 mM NaCl, 2.2 mM KCl, 20% Glycerol and 4 mM glutathione.

Stability: >6 months at -80°C . Avoid freeze/thaw cycles. Storing diluted protein is not recommended, if necessary, use carrier protein (BSA 0.1 – 0.5%).

References:

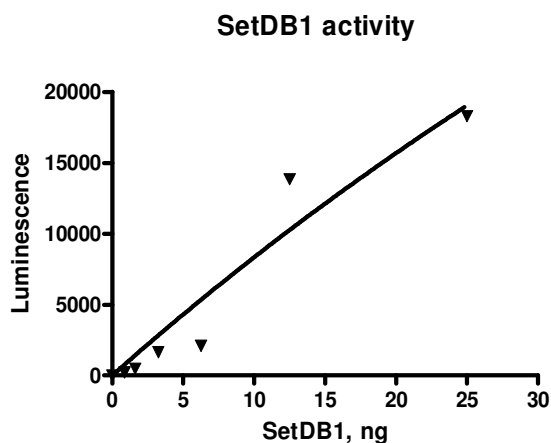
1. Dillon, S.C., *et al.*, *Genom. Biol.* 2005; **6**: 227.
2. Schultz, D.C. *et al.*, *Genes Dev.* 2002; **16**: 919-932.

Description: Human SetDB1 (variant 2), also known as Histone-lysine N-methyltransferase SETDB1, SET domain bifurcated 1, KMT1E, ERG-associated protein with SET domain (ESET), GenBank Accession No. NM_012432, a.a. 510-1290(end) expressed in a Baculovirus Sf9 cell expression system. MW = 114 kDa.

Assay Conditions: Assay was performed using the SETDB1 Chemiluminescent Assay Kit, BPS Bioscience Cat. #51056 per the manufacturer's instructions.

Application: Useful for the study of enzyme kinetics, screening inhibitors, and selectivity profiling.

Quality Assurance

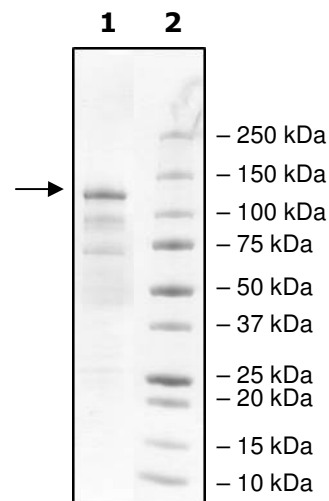


**4-20% SDS-PAGE
 Coomassie staining**

Lane 1:
 2 μg SetDB1

Lane 2:
 Protein Marker

MW: 114 kDa
Purity: $\geq 48\%$



OUR PRODUCTS ARE FOR RESEARCH USE ONLY. NOT FOR DIAGNOSTIC OR THERAPEUTIC USE.

To place your order, please contact us by Phone **1.858.829.3082** Fax **1.858.481.8694**

Or you can Email us at: info@bpsbioscience.com

Please visit our website at: www.bpsbioscience.com