

## Data Sheet

### **EZH2 Y641C** **/EED/SUZ12/RbAp48/AEBP2**

Human, recombinant

**Catalog #:** 51029**Lot #:** 100907      **Conc.:** 0.62 mg/ml

**Formulated in:** 45 mM Tris-HCl, pH 8.0, 124 mM NaCl, 2.4 mM KCl, 225 mM Imidazole, 10% Glycerol, 3 mM DTT.

**Stability:** >6 months at -80 °C

**References:**

1. Varambally, S. *et al. Science* **322 (5908)**: 1695-1699 (2008).
2. Rakotobe, D. *et al., Virol. J.* **5** : 32 (2008).

**Application Reference:**

Morin, R.D., *et al. Nat Genet.* 2010 February; **42(2)**: 181-185.

**Description:**

Mutant version of our regular EZH2 5-member complex (Cat. # 51004), but with a Tyr-to-Cys mutation on a.a. 646 of the EZH2 protein. Complex of human EZH2 (GenBank Accession No. NM\_004456), (a-a 2-end ; Y646C\*) with N-terminal His tag, MW= 86 kDa, human EED (NM\_003797) (a-a 2-end) with N-terminal Flag tag, MW= 51 kDa, human SUZ12 (NM\_015355) (a-a 2-end) with N-terminal His tag, MW = 87 kDa, Human AEBP2 (NM\_153207) (a-a 2-end) with N-terminal His tag, MW= 53 kDa, and human RbAp48 (NM\_005610) (a-a 2-end) with N-terminal His tag, MW = 48 kDa, co-expressed in baculovirus expression system. \*This mutation is often cited as Y641C in variant 3 (GenBank Accession No. NM\_001203247).

**Application:**

Useful for the study of enzyme kinetics, screening inhibitors, and selectivity profiling.

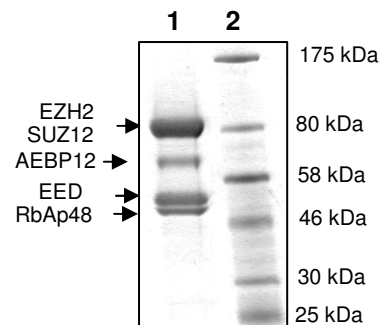
### **Quality Assurance**

**4-20% gradient SDS-PAGE**  
**Coomassie staining**

**Lane 1:**  
12.4 µg enzyme complex

**Lane 2:**  
Protein Marker  
BioLabs (#P7708L)

Purity ≥ 99%



OUR PRODUCTS ARE FOR RESEARCH USE ONLY. NOT FOR DIAGNOSTIC OR THERAPEUTIC USE.

To place your order, please contact us by Phone **1.858.829.3082** Fax **1.858.481.8694**

Or you can Email us at: [info@bpsbioscience.com](mailto:info@bpsbioscience.com)

Please visit our website at: [www.bpsbioscience.com](http://www.bpsbioscience.com)