

Data Sheet

EZH2/EED

Human, recombinant

Catalog #: 51002

Lot#: 130227 Conc.: 0.26 mg/ml

Formulated in: 40 mM Tris-HCl, pH 8.0, 110 mM NaCl, 2.2 mM KCl, 200 mM Imidazole, 20% Glycerol.

Stability: >6 months at -80°C

References:

1. Varambally, S. et al. Science 322 (5908), 1695-1699 (2008).
2. Rakotobe, D. et al., Virol. J. 5, 32 (2008).

Description:

Complex of human EZH2 (GenBank Accession No. NM_004456), (amino acids 2-end) with N-terminal His tag, MW= 87 kDa, and human EED (GenBank Accession No. NM_003797) (amino acid 2-end) with N-terminal Flag tag, MW= 51 kDa, co-expressed in baculovirus expression system.

Application:

Useful for Western blot analysis and to investigate protein-protein interactions in the EZH2 complex.

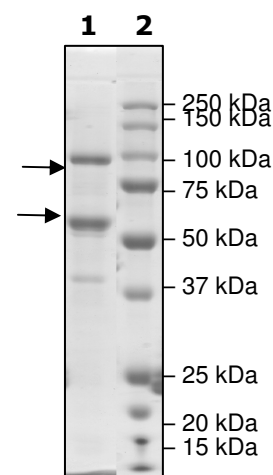
Quality Assurance

4-20% SDS-PAGE Coomassie staining

Lane 1:
6.2 µg Complex
Lane 2:
Protein Marker

MW:
EZH2 86 kDa
EED 51 kDa

Purity: ≥85%



OUR PRODUCTS ARE FOR RESEARCH USE ONLY. NOT FOR DIAGNOSTIC OR THERAPEUTIC USE.

To place your order, please contact us by Phone **1.858.829.3082** Fax **1.858.481.8694**

Or you can Email us at: info@bpsbioscience.com

Please visit our website at: www.bpsbioscience.com