

## Data Sheet

### HDAC 6 (H611A), GST-Tag

Human, Recombinant, N-terminal GST-Tag

**Catalog #:** 50066

**Lot #:** 171215-G

**Conc.:** 0.77 mg/ml

**Formulated in:** 40 mM Tris-HCl, pH 8.0, 110 mM NaCl, 2.2 mM KCl, 0.04% Tween-20 and 20% Glycerol.

**Stability:** At least 6 months at  $-80^{\circ}\text{C}$ . Avoid freeze/thaw cycles. Storing diluted enzyme is not recommended, if necessary, use carrier protein (BSA 0.1 – 0.5%).

**Reference:**

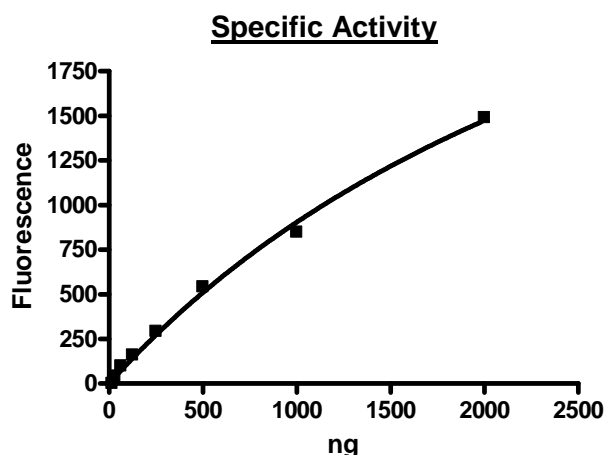
1. Li S. *et al.*, *Neurology*. 2010; **41(2)**: 112-6.
2. Strausberg, R.L. *et al.*, *Proc. Natl. Acad. Sci. U.S.A.* 2002; **99(26)**: 16899-16903.

**Description:** Human HDAC6 with H611A mutation (GenBank Accession No. NM\_006044), full length with N-terminal GST tag, MW= 161 kDa, expressed in a baculovirus expression system. Protein was purified by affinity chromatography and gel filtration.

**Specific Activity:** 0.83 pmole/min/ $\mu\text{g}$   
**Assay Conditions:** 25 mM Tris/HCl, pH 8.0, 137 mM NaCl, 2.7 mM KCl, 1 mM MgCl<sub>2</sub>, and 0.1 mg/ml BSA, 20  $\mu\text{M}$  BPS HDAC substrate 3 (Catalog #50037), and HDAC6 H611A (15 – 1000 ng). Incubation condition: 30 min at  $37^{\circ}\text{C}$  followed by developing for 15 min at room temperature.

**Application:** Useful for the study of enzyme kinetics, screening inhibitors, and selectivity profiling.

### Quality Assurance



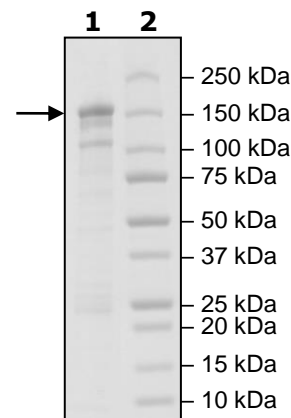
**4-20% SDS-PAGE  
Coomassie staining**

**Lane 1:**  
2  $\mu\text{g}$  HDAC6(H611A)

**Lane 2:**  
Protein Marker

**MW:** 161 kDa

**Purity:**  $\geq 48\%$



OUR PRODUCTS ARE FOR RESEARCH USE ONLY. NOT FOR DIAGNOSTIC OR THERAPEUTIC USE.

To place your order, please contact us by Phone **1.858.829.3082** Fax **1.858.481.8694**

Or you can Email us at: [info@bpsbioscience.com](mailto:info@bpsbioscience.com)

Please visit our website at: [www.bpsbioscience.com](http://www.bpsbioscience.com)



6042 Cornerstone Court W, Ste B  
 San Diego, CA 92121  
 Tel: 1.858.829.3082  
 Fax: 1.858.481.8694  
 Email: info@bpsbioscience.com

**Sequence**

MSPILGYWKIKGLVQPTRL<sup>Red</sup>LL<sup>Red</sup>TV<sup>Red</sup>TV<sup>Red</sup>TEHLYERDEGDKWRNKKFELGLEFPNL  
 PYYIDGDVKLTQSM<sup>Red</sup>AI<sup>Red</sup>IRYIADKHNMLGGCPKERAEISMLEGAVLDIRYGVSR<sup>Red</sup>IA  
 YSKDFETLKVD<sup>Red</sup>FLSKLPEMLKMFEDRLCHKTYLNGDHVTHPDFM<sup>Red</sup>LYDALDVVLYM  
 DPMCLDAFPKLVCFKKRIEAI<sup>Red</sup>PQIDKYLKSSKYIAWPLQGWQATFGGGDHP<sup>Blue</sup>PKSD  
 PMGHHHHHHGRRRASVAAGILVPRGSPGLDGIYARGIQ<sup>Blue</sup>MTSTGQDSTTTTRQRRSR  
 QNPQSPPQDSSVTSKRNIKKGAVPRSIPNLAEVKKKGKMKKLGQAMEEDLIVGLQ  
 GMDLNLEAEALAGTGLVLDEQLNEFHCLWDDSFPEGPERLHAIKEQLIQEGLLDR  
 CVSFQARFAEKEELMLVHSLEYIDL<sup>Black</sup>METTQYMNEGELRVLADTYDSVYLHPNSYS  
 CACLASGSVLRLVDAVLGAEIRNGMAIIRPPGHHAQHSLMDGYCMFNHVAVAARY  
 AQQKHRIRRVLIVDWDVHHGQGTQFTFDQDPSVLYFSIHRYEQGRFWPHLKASNW  
 STTGFGQGQGYTINVPWNQVGMRDADYIAAFLHVLLPVALEFQPQLVVAAGFDA  
 LQGD<sup>Black</sup>PKGEMAATPAGFAQLTHLLMGLAGGKLILSLEGGYNLRALAEGVSASLHTL  
 LGDPCPMLES<sup>Black</sup>PGAPCRSAQASVSCALEALEPFWEVLVLRSTETVERDNMEEDNVEE  
 SEEEGPWEPPVLPIL<sup>Black</sup>TWPVLQSR<sup>Black</sup>TGLVYDQNMNHCNLWDSHHPEVPQRI<sup>Black</sup>LRIMC  
 RLEELGLAGRCLTLTPRPATEAELLTCHSAEYVGH<sup>Black</sup>LRATEKMKTRELHRESSNFD  
 SIYICPSTFACAQLATGAACRLVEAVLSGEVLNGAAVVRPPGH<sup>Green</sup>AEQDAACGFCF  
 FNSVAVAAARHAQTISGHALRILIVDWDVHHGNGTQHM<sup>Black</sup>FEDDPSVLYVSLHRYDHG  
 TFFPMGDEGASSQIGRAAGTGFTVNVAVWNGPRMGDADYLAAWHRLVLP<sup>Black</sup>IAYEFNP  
 ELVLVSAGFDAARGDPLGGCQVSPEGY<sup>Black</sup>AHLTHLLMGLASGRIILILEGGYNLTSI  
 SESMAACTRSL<sup>Black</sup>LGDPPL<sup>Black</sup>TLPRPPLSGALASITETIQVHRRYWRSLRVMKVEDR  
 EGPSSSKLVTKKAPQPAKPRLAERMTTREKKVLEAGMGK<sup>Black</sup>VTSASFGEESTPGQTN  
 SETAVVALTQDQPSEAATGGATLAQTISEAAIGGAMLGQTTSEEAVGGATPDQTT  
 SEETVGGAILDQTTSEDAVGGATLGQTTSEEAVGGATLAQTTSEAMEGATLDQT  
 TSEEAPGGTELIQTPLASSTDHQTPTS<sup>Black</sup>PVQGTTPQISPSTLIGSLRTL<sup>Black</sup>LELGSES  
 QGASESQAPGEENLLGEAAGGQDMADSM<sup>Black</sup>LMQGS<sup>Black</sup>RGLTDQAI<sup>Black</sup>FYAVT<sup>Black</sup>PLPWC<sup>Black</sup>PHLV  
 AVCPIPAAGLDVTQPCGDCGTIQENWVCLSCYQVYCGRYINGHMLQH<sup>Black</sup>HGNSGHPL  
 VLSYIDL<sup>Black</sup>SAWCY<sup>Black</sup>YCQAYVHHQALLDVKNIAHQNKFGEDMPHPH

**Red:** GST-tag

**Blue:** Short Linker including Thrombin Cleavage Site

**Black:** HDAC6 (aa 1-1215(end))\_ NM\_006044/NP\_006035

**Green:** H216A mutation

OUR PRODUCTS ARE FOR RESEARCH USE ONLY. NOT FOR DIAGNOSTIC OR THERAPEUTIC USE.

To place your order, please contact us by Phone **1.858.829.3082** Fax **1.858.481.8694**

Or you can Email us at: [info@bpsbioscience.com](mailto:info@bpsbioscience.com)

Please visit our website at: [www.bpsbioscience.com](http://www.bpsbioscience.com)