

Data Sheet

JMJD1B (KDM3B), FLAG-tag

Human, recombinant, N-terminal Avi-,
 FLAG-tags

Catalog #: 50421

Lot #: 150129-1 **Conc.:** 0.12 mg/ml

Formulated in: 40 mM Tris-HCl, pH 8.0,
 110 mM NaCl, 2.2 mM KCl, 0.04%
 Tween-20, 20% glycerol, 80 µg/ml FLAG
 peptide

Stability: At least 6 months at -80°C.
 Avoid freeze/thaw cycles. Storing diluted
 enzyme is not recommended, if
 necessary, use carrier protein (BSA 0.1
 - 0.5%).

References:

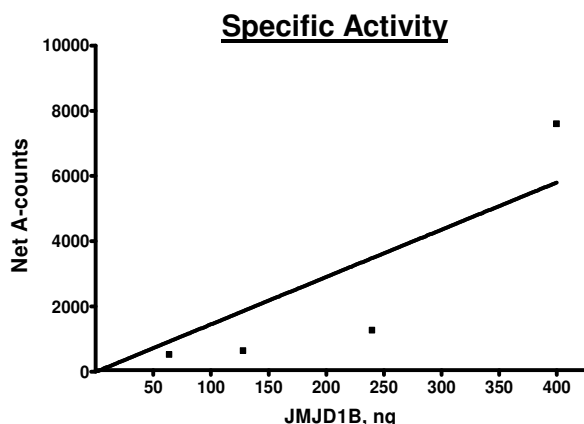
1. Kim, J-Y, *et al.*, *Mol. Cel. Biol.* 2012.
32(14): 2917-2933.
2. Mikhaleva, I.I., *et al.*, *Peptides.* 2011.
32(4): 826-831.

Description: Human JMJD1B, also known
 as lysine-specific demethylase 3B
 (KDM3B), JHDM2B, and KIA1082,
 GenBank Accession No. NM_016604/
 NP_057688, a.a. 2-1761 (end) with N-
 terminal Avi- and FLAG-tags, MW=195
 kDa, expressed in a baculovirus-infected
 Sf9 cell expression system.

Specific Activity: 0.0045 pmole/min/µg
Assay Conditions: Reaction was
 performed with 20 mM HEPES (pH 7.4),
 150 mM NaCl, 500 µM α-ketoglutarate, 25
 µM iron, 2 mM ascorbic acid, 0.01%
 Tween-20, 0.5 µM biotinylated peptide
 substrate, and JMJD1B added to the
 wells. Add antibody against methylated
 H3K9. Incubate for 30 min. followed by
 Alphascreen® detection.

Application: Useful for the study of
 enzyme kinetics, screening inhibitors, and
 selectivity profiling.

Quality Assurance

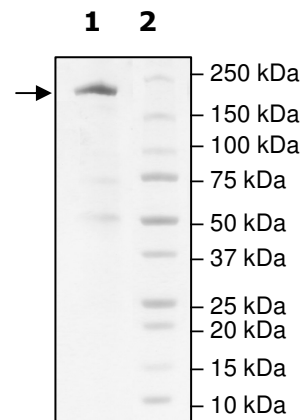


**4-20% SDS-PAGE
 Coomassie staining**

Lane 1:
 2.4 µg JMJD1B

Lane 2:
 Protein Marker

Purity: ≥80%
MW: 195 kDa



OUR PRODUCTS ARE FOR RESEARCH USE ONLY. NOT FOR DIAGNOSTIC OR THERAPEUTIC USE.

To place your order, please contact us by Phone **1.858.829.3082** Fax **1.858.481.8694**

Or you can Email us at: info@bpsbioscience.com

Please visit our website at: www.bpsbioscience.com