

Data Sheet

FBXL11(KDM2A)

Human recombinant, with N-terminal FLAG-Avi-tag

Catalog #: 50156

Lot #: 140731-2

Conc: 0.22 mg/ml

Formulated in: 40 mM Tris-HCl, pH 8.0, 110 mM NaCl, 2.2 mM KCl, 0.04% Tween-20, 20% glycerol, 80 µg/ml FLAG peptide

Stability: >6 months at -80°C. Avoid freeze/thaw cycles. Storing diluted enzyme is not recommended, if necessary, use carrier protein (BSA 0.1 – 0.5%).

References:

1. Tanaka, Y., *et al.* (2010). *EMBO J.* **29(9)**:1510-22.
2. Blackledge, N.P., *et al.* (2010). *Mol. Cell.* **38(2)**:179-90.
3. Frescas, D., *et al.* (2008). *Cell Cycle* **7(22)**:3539-47.

Description:

Human F-Box Protein 11 (FBXL11), also known as KDM2A, Ndy2, and JHDM1A, GenBank Accession # NM_012308, a.a. 2-700 with N-terminal FLAG-Avi-tag, MW = 82 kDa, expressed in Sf9 cells via a baculovirus expression system.

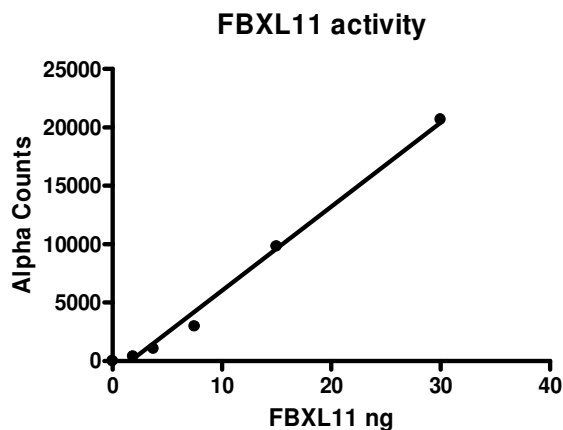
Specific Activity: 0.01 pmole/min/µg

Assay Conditions: The assay was performed using BPS Bioscience FBXL11 Homogeneous Assay Kit (Cat #50611) and following the manufacturer's recommended protocol.

Application:

Useful for the study of enzyme kinetics, screening inhibitors, and selectivity profiling.

Quality Assurance

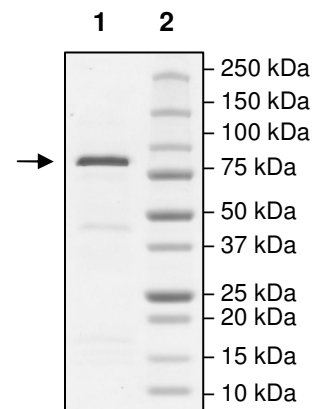


4-20% SDS-PAGE Coomassie staining

Lane 1:
3.9 µg FBXL11 N-term
FLAG-Avi-tag

Lane 2:
Protein Marker

MW: 82 kD
Purity: ≥80%



OUR PRODUCTS ARE FOR RESEARCH USE ONLY. NOT FOR DIAGNOSTIC OR THERAPEUTIC USE.

To place your order, please contact us by Phone **1.858.829.3082** Fax **1.858.481.8694**

Or you can Email us at: info@bpsbioscience.com

Please visit our website at: www.bpsbioscience.com