

Data Sheet

CTLA4 (CD152), Fc fusion, Biotin-labeled

Human, Recombinant, Fc fusion, C-terminal biotin-tag

Catalog #: 71152-2

Lot #: 160711-G **Conc.:** 0.47 mg/ml

Formulated in: 8 mM Phosphate, pH 7.4, 110 mM NaCl, 2.2 mM KCl, and 20% glycerol

Stability: At least 6 months at -80°C . Avoid freeze/thaw cycles. Protein may be diluted to $\geq 100 \mu\text{g/ml}$ in PBS + glycerol and stored at -80°C .

References:

1. Dilek, N., *et al.*, *PLOS ONE*. 2013 Dec. 23; **8(12)**:e83139.
2. Leach, D.R., *et al.*, *Science*. 1996; **271(5256)**:1734-1736.

Description: Human secreted CTLA4, Fc fusion protein, also known as Cytotoxic T-lymphocyte-associated protein 4 and CD152. GenBank Accession No. NM_005214, a.a. 36-162, fused at the C-terminus to the Fc portion of human IgG1 and with a C-terminal Avi-tag, expressed in a HEK293 cell expression system. This protein was biotinylated using AviTag™ technology. MW = 42 kDa (monomer). Note: This protein runs at a higher MW by SDS-PAGE due to glycosylation.

Application: Useful for studying protein binding and screening small molecules.

Quality Assurance

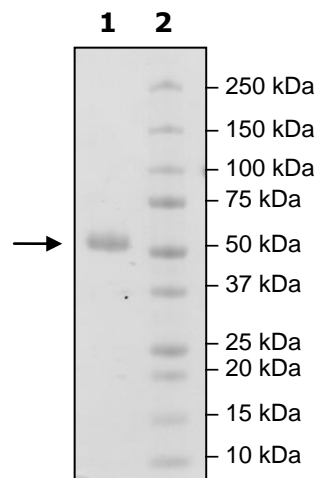
**4-20% SDS-PAGE
Coomassie staining**

Lane 1:
3 μg CTLA4

Lane 2:
Protein Marker

MW: 42 kDa +glycans

Purity: $\geq 90\%$



OUR PRODUCTS ARE FOR RESEARCH USE ONLY. NOT FOR DIAGNOSTIC OR THERAPEUTIC USE.

To place your order, please contact us by Phone **1.858.829.3082** Fax **1.858.481.8694**

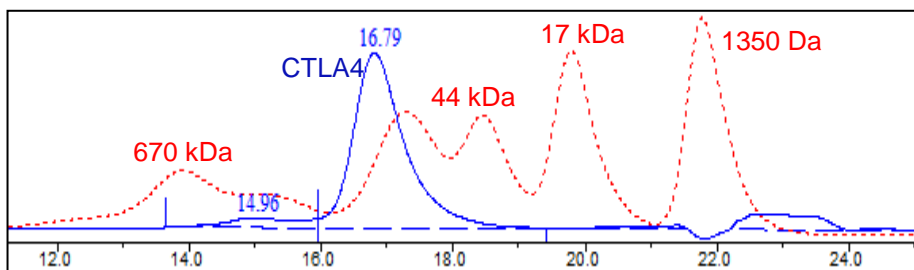
Or you can Email us at: info@bpsbioscience.com

Please visit our website at: www.bpsbioscience.com



6042 Cornerstone Court W, Ste B
San Diego, CA 92121
Tel: 1.858.829.3082
Fax: 1.858.481.8694
Email: info@bpsbioscience.com

Gel Filtration Curve:



<10 % Aggregation

OUR PRODUCTS ARE FOR RESEARCH USE ONLY. NOT FOR DIAGNOSTIC OR THERAPEUTIC USE.

To place your order, please contact us by Phone **1.858.829.3082** Fax **1.858.481.8694**
Or you can Email us at: info@bpsbioscience.com
Please visit our website at: www.bpsbioscience.com