

Data Sheet

PLA2G12B

Human, recombinant, C-terminal His tag
Catalog #: 60093
Lot #: 120116 **Conc.:** 0.14mg/ml

Formulated in: 40 mM Tris-HCl, pH 8.0,
110 mM NaCl, 2.2 mM KCl, 200 mM
Imidazole, 20% Glycerol.

Stability: >6 months at -80°C

References:

1. Berg M., et al., Mol Cancer. **9:100.**
(2010).

2. Kopec AK., et al., Toxicol Appl
Pharmacol. **256(2):154-67.** (2011).

Description: Human PLA2G12B
(GenBank Accession No. NM_032562),
(a.a. 20-295(end)), with C-terminal His
tag, MW=21.1 kDa, expressed in a
mammalian cell expression system

Application:
Suitable for binding studies, as an
immunogen, and as a standard for
Western blotting.

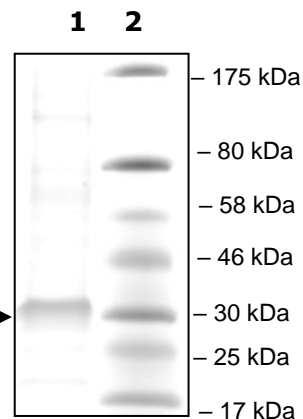
Quality Assurance

**10% SDS-PAGE
Coomassie
staining**

Lane 1:
2.8 µg PLA2G12B

Lane 2:
Protein Marker
BioLabs (#P7708L) →

MW: 21.1 kDa
Purity: ≥60%



OUR PRODUCTS ARE FOR RESEARCH USE ONLY. NOT FOR DIAGNOSTIC OR THERAPEUTIC USE.

To place your order, please contact us by Phone **1.858.829.3082** Fax **1.858.481.8694**
Or you can Email us at: info@bpsbioscience.com
Please visit our website at: www.bpsbioscience.com