

## Data Sheet

### PLA2G12A

Human, recombinant, C-terminal His tag  
**Catalog #:** 60092  
Lot #: 111205-1      Conc.: 0.16mg/ml

**Formulated in:** 40 mM Tris-HCl, pH 8.0,  
110 mM NaCl, 2.2 mM KCl, 200 mM  
Imidazole, 20% Glycerol.

**Stability:** >6 months at -80°C

**References:**

1. Berg M., et al., Mol Cancer. **9:100**. (2010).
2. Kopec AK., et al., Toxicol Appl Pharmacol. **256(2):154-67**. (2011).

**Description:** Human PLA2G12A (GenBank Accession No. NM\_030821), (a.a. 23-189(end)), with C-terminal His tag, MW=22 kDa, expressed in a mammalian cell expression system

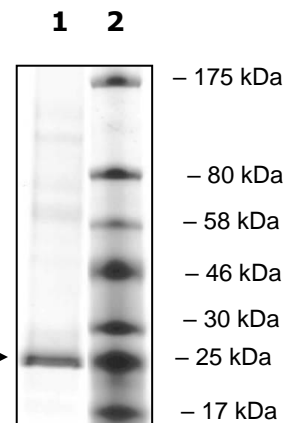
**Application:**  
Suitable for binding studies, as an immunogen, and as a standard for Western blotting.

### Quality Assurance

**10% SDS-PAGE  
Coomassie  
staining**

**Lane 1:**  
2.8 µg PLA2G12A  
**Lane 2:**  
Protein Marker  
BioLabs (#P7708L)

**MW:** 22 kDa  
**Purity:** ≥80%



OUR PRODUCTS ARE FOR RESEARCH USE ONLY. NOT FOR DIAGNOSTIC OR THERAPEUTIC USE.

To place your order, please contact us by Phone **1.858.829.3082** Fax **1.858.481.8694**  
Or you can Email us at: [info@bpsbioscience.com](mailto:info@bpsbioscience.com)  
Please visit our website at: [www.bpsbioscience.com](http://www.bpsbioscience.com)