



6042 Cornerstone Court W, Ste B  
San Diego, CA 92121  
**Tel:** 1.858.829.3082  
**Fax:** 1.858.481.8694  
**Email:** [info@bpsbioscience.com](mailto:info@bpsbioscience.com)

## **Data Sheet**

### **CD155 (PVR) - HEK293 Cell Line**

### **Catalog #60537**

**Background:** CD155 is a transmembrane glycoprotein receptor belonging to the immunoglobulin superfamily. It is highly expressed on dendritic cells, fibroblasts, endothelial cells, and multiple tumor cells including ovarian carcinoma, non-small cell lung, glioblastoma, and colorectal carcinoma. It has a high affinity for a T cell regulatory transmembrane surface protein called TIGIT (T cell immunoglobulin and ITIM domains), and plays a key role in tumor cell invasion and migration. Interaction between CD155 and TIGIT causes immunosuppressive effects on CD4+ and CD8+ T cells, which hinders T cell proliferation and function. CD155 also interacts with regulatory receptors CD226 (expressed on natural killer (NK) cells, monocytes and CD4+ T cells) and CD96. While CD155-CD226 engagement activates NK cell cytotoxicity and T cell response, CD155-CD96 interaction inhibits NK cell function. Due to these opposing regulatory effects, blockade of CD155-TIGIT and CD155-CD226 interactions are attractive therapeutic strategies in cancer immunotherapy and autoimmune diseases, respectively.

**Description:** Recombinant HEK293 cell line expressing full length human CD155, also known as poliovirus receptor (PVR) or nectin-like molecule-5 (NECL-5). Expression is confirmed by Western Blot.

**Application:** Since the HEK293 parental cell line does not express endogenous CD155, the CD155/HEK293 Cell Line functions as an antigen-presenting cell (APC) to stimulate TIGIT-specific signaling responses in lymphocytes, such as cell proliferation and cytokine release, or with a TIGIT reporter cell line (BPS Cat. #60538). This cell line is also ideal for validating binding affinity to TIGIT (see application reference 1) or CD155 and CD226 (see application reference 2).

#### **Host Cell**

HEK293 cells; adherent epithelial cells.

#### **Format**

Each vial contains ~3 x 10<sup>6</sup> cells in 1 ml of 10% DMSO in FBS.

#### **Storage**

Store in liquid nitrogen immediately upon receipt.

OUR PRODUCTS ARE FOR RESEARCH USE ONLY. NOT FOR DIAGNOSTIC OR THERAPEUTIC USE.

To place your order, please contact us by Phone **1.858.829.3082** Fax **1.858.481.8694**

Or you can Email us at: [\*\*info@bpsbioscience.com\*\*](mailto:info@bpsbioscience.com)

Please visit our website at: [\*\*www.bpsbioscience.com\*\*](http://www.bpsbioscience.com)



6042 Cornerstone Court W, Ste B  
San Diego, CA 92121  
**Tel:** 1.858.829.3082  
**Fax:** 1.858.481.8694  
**Email:** [info@bpsbioscience.com](mailto:info@bpsbioscience.com)

### Culture Medium

**Thaw Medium 1 (BPS Cat. #60187):** MEM medium (Hyclone #SH30024.01) supplemented with 10% FBS (Invitrogen #26140-079), 1% non-essential amino acids (Hyclone #SH30238.01), 1 mM Na pyruvate (Hyclone #SH30239.01), 1% Penicillin/Streptomycin (Hyclone SV30010.01).

**Growth Medium 1F (BPS Cat. # 79540):** Thaw Medium 1 (BPS Cat #60187) plus 100 µg/ml Hygromycin B (Thermo Fisher, Cat. #10687010).

### Culture conditions

**Frozen Cells:** Prepare a T-25 culture flask with 10 ml of pre-warmed growth medium. Quickly thaw cells in a 37°C water bath with constant and slow agitation. Clean the outside of the vial with 70% ethanol and immediately transfer the entire contents to Thaw Medium 1 (**no Hygromycin B**). Avoid pipetting up and down, and gently rock the flask to distribute the cells. Incubate the cells in a humidified 37°C incubator with 5% CO<sub>2</sub>. After 48 hours of incubation, change to fresh Thaw Medium 1 (**no Hygromycin B**), without disturbing the attached cells. Continue to change the medium every 2-3 days until the cells reach desired confluency. If slow cell growth occurs during resuscitation, increase FBS to 15% for the first week of culture. Switch to Growth Medium 1F after the first passage.

**Subculture:** When cells reach 90% confluency, remove the medium and GENTLY wash once with PBS (without Magnesium or Calcium). These cells are loosely adherent and detach easily so do not re-suspend the PBS directly onto the cell surface. Treat cells with 2 ml of 0.25% trypsin/EDTA and incubate for 2-3 minutes at 37°C. After confirming cell detachment by light microscopy, add 10 ml pre-warmed Growth Medium 1F and gently pipette up and down to dissociate cell clumps. Transfer cells to a 15 ml conical tube and centrifuge at 200 x g for 5 minutes. Remove the medium and re-suspend cells in 10 ml of pre-warmed Growth Medium 1F. Dispense 5 ml of the cell suspension into a new T75 flask containing pre-warmed 20 ml Growth Medium 1F. Incubate cells in a humidified 37°C incubator with 5% CO<sub>2</sub>. Freeze cells in freezing medium (10% DMSO in FBS) when cells reach 90% confluency. Cells have been demonstrated to be stable for at least 15 passages; BPS recommends preparing frozen stocks so cells are not used beyond passage 20.

### Mycoplasma Testing

This cell line has been screened using the MycoAlert™ Mycoplasma Detection Kit (Lonza, Cat. #LT07-118) to confirm the absence of Mycoplasma contamination. MycoAlert Assay Control Set (Lonza, Cat. #LT07-518) was used as a positive control.

### Application References

1. Yu, X., *et.al.* (2009) The Surface Protein TIGIT Suppresses T cell Activation by Promoting the Generation of Mature Immunoregulatory Dendritic Cells. *Nat Immunol.* **10**: 48-57.
2. Bottino, C., *et.al.* (2003) Identification of PVR (CD155) and Nectin-2 (CD112) as Cell Surface Ligands for the Human DNAM-1 (CD226) Activating Molecule. *J Exp Med.* **198**: 557-567.

OUR PRODUCTS ARE FOR RESEARCH USE ONLY. NOT FOR DIAGNOSTIC OR THERAPEUTIC USE.

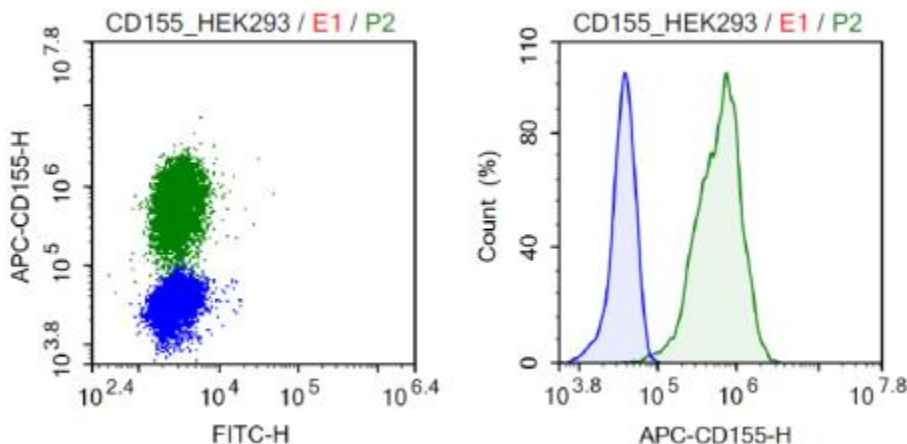
To place your order, please contact us by Phone **1.858.829.3082** Fax **1.858.481.8694**

Or you can Email us at: [info@bpsbioscience.com](mailto:info@bpsbioscience.com)

Please visit our website at: [www.bpsbioscience.com](http://www.bpsbioscience.com)

3. Sloan, K.E., *et.al.* (2005) CD155/PVR Enhances Glioma Cell Dispersal by Regulating Adhesion Signaling and Focal Adhesion Dynamics. *Cancer Res.* **65**: 10930-37.

### Quality Assurance and Functional Analysis



**Figure 1. Expression of CD155 protein in CD155/HEK293 cells validated by flow cytometry.** Flow cytometry showed APC conjugated anti- human CD155 antibody (Biolegend, Cat. # 337617) detects CD155-positive cells (green), using naïve HEK293 cells as a negative control (blue).

### Vector and sequence

Human PVR/CD155 (NP\_001129241.1; Accession BC BC015542) was cloned into the MCS of pIRESHyg3 vector (Clontech, Cat No. 631620).

MARAMAAAWPLLLVALLVLSWPPPGTGDVVVQAPTQVPGFLGDSVTLP CYLQVPNMEVTHVS  
 QLTWARHGESGSMVAFHQ TQG PSYSESKRLEFVAARLG AELRNASLRMFGLRVEDEGNYTCL  
 FVTFPQGSRSVDIWLRLAKPQNTAEVQKVQLTGEPVPMARCVSTGGRPPAQITWHS DLGGM  
 PNTSQVPGFLSGT V T V T S L W I L V P S S Q V D G K N V T C K V E H E S F E K P Q L L T V N L T V Y Y P P E V S I S G  
 YDNNWYLGQNEATLTCDARSNPEPTGYNWSTTMGPLPPFAVAQGAQLLIRPVDKPI NTTLICN  
 VTNALGARQAELTVQVKEGPPSEHSGMSRNAIFLV LGILVFLILLGIGIYFYWSKCSREVLW HC  
 HLCPSSTEHASASANGHVSYS AVSRENNSSSQDPQTEGTR

**License Disclosure:** Purchase of this cell line grants you with a 10-year license to use this cell line in your immediate laboratory, for research use only. This license does not permit you to share, distribute, sell, sublicense, or otherwise make the cell line available for use to other laboratories, departments, research institutions, hospitals, universities, or biotech companies. The license does not permit use of this cell line in humans or for

OUR PRODUCTS ARE FOR RESEARCH USE ONLY. NOT FOR DIAGNOSTIC OR THERAPEUTIC USE.

To place your order, please contact us by Phone **1.858.829.3082** Fax **1.858.481.8694**

Or you can Email us at: [info@bpsbioscience.com](mailto:info@bpsbioscience.com)

Please visit our website at: [www.bpsbioscience.com](http://www.bpsbioscience.com)



6042 Cornerstone Court W, Ste B  
San Diego, CA 92121  
**Tel:** 1.858.829.3082  
**Fax:** 1.858.481.8694  
**Email:** [info@bpsbioscience.com](mailto:info@bpsbioscience.com)

therapeutic or drug use. The license does not permit modification of the cell line in any way. Inappropriate use or distribution of this cell line will result in revocation of the license and result in an immediate cease of sales and distribution of BPS products to your laboratory. BPS does not warrant the suitability of the cell line for any particular use, and does not accept any liability in connection with the handling or use of the cell line. Modifications of this cell line, transfer to another facility, or commercial use of the cells may require a separate license and additional fees; contact [sales@bpsbioscience.com](mailto:sales@bpsbioscience.com) for details. Publications using this cell line should reference BPS Bioscience, Inc., San Diego.

### Related Products

<b><u>Product</u></b>	<b><u>Cat. #</u></b>	<b><u>Size</u></b>
Thaw Medium 1	60187	100 ml
ONE-Step™ Luciferase Assay System	60690-1	10 ml
ONE-Step™ Luciferase Assay System	60690-2	100 ml
Human CD155 (PVR) His-tag Protein	71181	100 µg
Mouse CD155 (PVR) His-tag Protein	71167	100 µg
Mouse CD155, His-tag, Biotin-labeled	71168	50 µg
Human CD226, Fc fusion	71252	100 µg
Human CD226, Fc fusion, Biotin-labeled	71253	50 µg
Human CD112, Fc fusion	71197	100 µg
Human CD112, Fc fusion, Biotin-labeled	71234	50 µg
Human TIGIT, Fc fusion	71186	100 µg
Human TIGIT, Fc fusion, Biotin-labeled	71251	50 µg
TIGIT:CD155 Homogenous Assay Kit	72029	384 reactions
CD226: CD155 Homogenous Assay Kit	72052	384 reactions
TIGIT:CD112 Homogenous Assay Kit	72030	384 reactions
CD226: CD112 Homogenous Assay Kit	72051	384 reactions
TIGIT NFAT-Luciferase Reporter Jurkat Cell Line	60538	2 vials

OUR PRODUCTS ARE FOR RESEARCH USE ONLY. NOT FOR DIAGNOSTIC OR THERAPEUTIC USE.

To place your order, please contact us by Phone **1.858.829.3082** Fax **1.858.481.8694**

Or you can Email us at: [info@bpsbioscience.com](mailto:info@bpsbioscience.com)

Please visit our website at: [www.bpsbioscience.com](http://www.bpsbioscience.com)