

Data Sheet

KRAS (G12C), BODIPY-GDP Loaded, His-tag

Human, Recombinant, N-terminal His-tag

Catalog #: 100537

Lot #: 191023

Conc.: 0.12 mg/ml

Formulated in: 20 mM HEPES, pH 7.4,
 150 mM NaCl, and 1 mM DTT.

Stability: At least 6 months at -70°C . Avoid
 freeze/thaw cycles.

References:

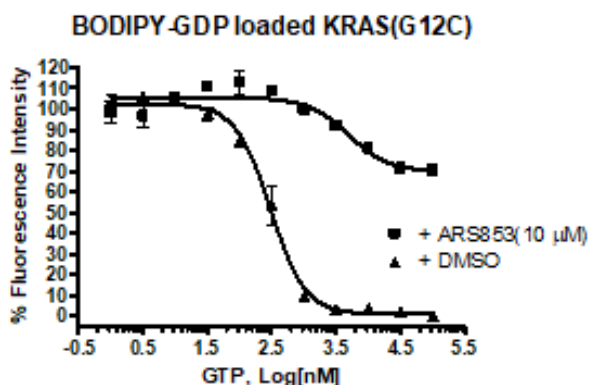
1. Ostrem, J. M., *et al.*, *Nature*. 2013;**503**:548-551.
2. Patricelli, M. P., *et al.*, *Cancer Discovery*. 2016;**6**:316-329.

Description: Human KRAS also known as C-K-RAS, CFC2, and K-RAS2A with G12C mutation and N-terminal His-tag, GenBank Accession No. NM_033360, a.a. 2-186, expressed in an *E. coli* expression system. MW=23 kDa. KRAS (G12C) His-Tag (BPS Bioscience #100413), is loaded with BODIPY-GDP. Unbound BODIPY-GDP was removed by spin column and it is ready for the GDP/GTP exchange assay. One vial, 60 μg , is enough for 100 reactions.

Assay Conditions: BODIPY-GDP loaded KRAS(G12C) was incubated with 10 μM ARS853 for 1 hour at room temperature and GDP/GTP exchange was initiated by adding EDTA (2.5 mM) and GTP at indicated concentration. After another 1-hour incubation, fluorescence intensity was measured at Ex475(5) nm/520(25) nm.

Application: Useful for KRAS(G12C) Nucleotide Exchange Assay Kit (BPS Bioscience Catalog # 79859), inhibitors screening, and selectivity profiling.

Quality Assurance

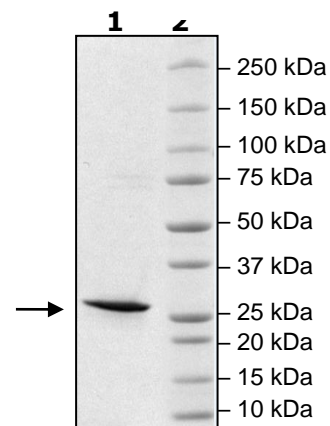


**4-20% SDS-PAGE
 Coomassie staining**

Lane 1:
 KRAS (G12C)
Lane 2:
 Protein Marker

MW: 23 kDa

Purity: $\geq 90\%$



OUR PRODUCTS ARE FOR RESEARCH USE ONLY. NOT FOR DIAGNOSTIC OR THERAPEUTIC USE.

To place your order, please contact us by Phone 1.858.202.1401, Fax 1.858.259.5734

Or you can Email us at: info@bpsbioscience.com

Please visit our website at: www.bpsbioscience.com