

## Data Sheet

### ASH1L (2433-2548)

Human, recombinant, N-terminal His-tag

**Catalog #:** 31147

Lot #: 130708-G1      Conc.: 0.18 mg/ml

**Formulated in:** 40 mM Tris-HCl pH 8, 110 mM NaCl, 2.2 mM KCl, 0.04% Tween-20, and 20% glycerol.

**Stability:** >6 months at  $-80^{\circ}\text{C}$ . Avoid freeze/thaw cycles.

**References:**

1. Muller, S., *et al.*, *Expert Rev. Mol. Med.* 2011;**13**:1-21.
2. An, S., *et al.*, *J. Biol Chem.* 2011;**286**(10):8369-8374.

**Description:**

Human bromodomain ash1 (absent, small or homeotic)-like (ASH1L), also known as, KMT2H, ASH1-Like Protein, Ash1, huASH1 and EC 2.1.1.43, GenBank Accession No. NM\_018489, a.a. 2433 - 2548, with N-terminal His-tag, MW = 14.2 kDa, expressed in an *E. coli* expression system.

**Application:**

Useful for the study of bromodomain binding assays, screening inhibitors, and selectivity profiling.

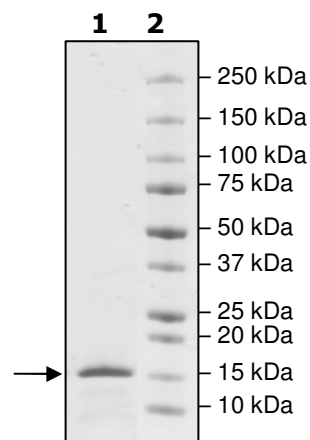
## Quality Assurance

**4-20% SDS-PAGE  
Coomassie staining**

**Lane 1:**  
2.7  $\mu\text{g}$  ASH1L

**Lane 2:**  
Protein Marker

**MW:** 14.2 kDa  
**Purity:**  $\geq 90\%$



OUR PRODUCTS ARE FOR RESEARCH USE ONLY. NOT FOR DIAGNOSTIC OR THERAPEUTIC USE.

To place your order, please contact us by Phone **1.858.829.3082** Fax **1.858.481.8694**

Or you can Email us at: [info@bpsbioscience.com](mailto:info@bpsbioscience.com)

Please visit our website at: [www.bpsbioscience.com](http://www.bpsbioscience.com)



6044 Cornerstone Court West, Suite E  
San Diego, CA 92121  
**Tel:** 1.858.829.3082  
**Fax:** 1.858.481.8694  
**Email:** [info@bpsbioscience.com](mailto:info@bpsbioscience.com)

**Sequence:**

**MHHHHHH**EVARAARLAQIFKEICDGIISYKDSSRQALAAPLLNLPPKKKNADYYEKISD  
PLDLITIEKQILTGYYKTVEAFDADMLKVFRNAEKYYGRKSPVGRDVCRLRKAYYNAR  
HEASAQ

OUR PRODUCTS ARE FOR RESEARCH USE ONLY. NOT FOR DIAGNOSTIC OR THERAPEUTIC USE.

To place your order, please contact us by Phone **1.858.829.3082** Fax **1.858.481.8694**  
Or you can Email us at: [info@bpsbioscience.com](mailto:info@bpsbioscience.com)  
Please visit our website at: [www.bpsbioscience.com](http://www.bpsbioscience.com)