

## Data Sheet

### **BCL-XL, His-tag**

Human, recombinant, C-terminal His-tag

**Catalog #:** 50273

**Lot #:** 90116      **Conc.:** 2.94 mg/ml

**Formulated in:** 45 mM Tris-HCl, pH 8.0, 124 mM NaCl, 2.4 mM KCl, 10% glycerol, 225 mM imidazole and 3 mM DTT.

**Stability:** At least 6 months at  $-80^{\circ}\text{C}$ . *Avoid freeze/thaw cycles. Storing diluted protein is not recommended, if necessary use carrier protein (BSA 0.1 – 0.5%).*

**References:**

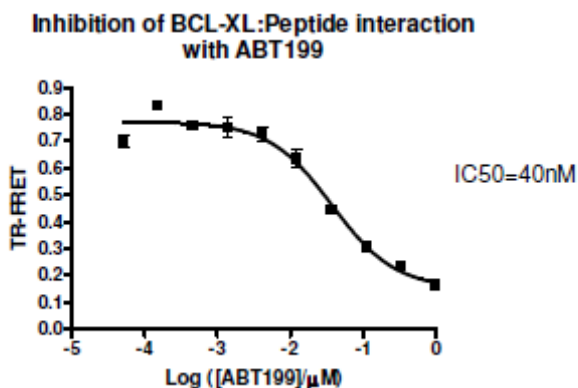
1. Meng Y. *et al.*, *Mol Cancer Ther.* 2008 Jul;**7**(7):2192-202.
2. Asakura T. *et al.*, *Mol Int J Oncol.* 2008 Aug;**33**(2):389-95.

**Description:** Human BCL-XL, also known as B cell lymphoma XL and BCL-Xlong, a.a. 1-212, GenBank Accession No. NM\_138578 with C-terminal His tag, MW = 24.6 kDa, expressed in an *E. coli* expression system.

**Assay Description:** Following the protocol for BPS Cat. #50223. Briefly, BCL-XL was combined with BCL-XL peptide ligand in TR-FRET assay buffer along with anti-His Tb donor and dye-labeled acceptor. Varying concentrations of ABT 199 were added and the reaction was incubated at room temperature for 2 hours followed by fluorescent intensity measurements.

**Application:** Useful for the study of apoptosis, screening inhibitors, and selectivity profiling.

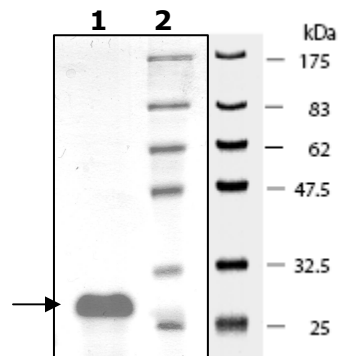
## Quality Assurance



**10% SDS-PAGE  
 Coomassie staining**

**Lane 1:**  
 4 μg BCL-XL  
**Lane 2:**  
 Protein Marker

**MW:** 24.6 kDa  
**Purity:** ≥90%



OUR PRODUCTS ARE FOR RESEARCH USE ONLY. NOT FOR DIAGNOSTIC OR THERAPEUTIC USE.

To place your order, please contact us by Phone **1.858.829.3082** Fax **1.858.481.8694**  
 Or you can Email us at: [info@bpsbioscience.com](mailto:info@bpsbioscience.com)  
 Please visit our website at: [www.bpsbioscience.com](http://www.bpsbioscience.com)