

## Data Sheet

### **BCL-2, His-tag**

Human, recombinant, C-terminal His-tag

**Catalog #:** 50272

**Lot #:** 140325-A      **Conc.:** 0.36 mg/ml

**Formulated in:** 40 mM Tris-HCl, pH 8.0, 110 mM NaCl, 2.2 KCl, 200 mM Imidazole, 20% glycerol, and 3 mM DTT.

**Stability:** At least 6 months at  $-80^{\circ}\text{C}$ . Avoid freeze/thaw cycles. Storing diluted enzyme is not recommended, if necessary, use carrier protein (BSA 0.1-0.5%)

**References:**

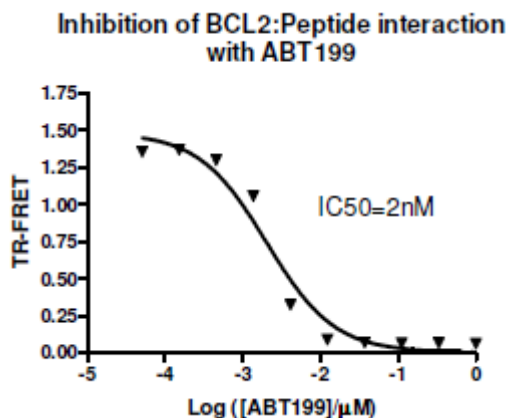
1. Labi V. *et al.*, *Cell Death Differ.* 2008 Jun;**15(6)**:977-87.
2. Rong Y.P. *et al.*, *Mol Cell.* 2008 Jul 25;**31(2)**:255-65.

**Description:** Human BCL-2, also known as B cell lymphoma 2, a. a. 1-211, GenBank Accession No. NM\_000633, with C-terminal His-tag, MW = 27 kDa, expressed in an *E. coli* expression system.

**Assay Description:** Following the protocol for BPS Cat. #50222. Briefly, BCL-2 was combined with BCL-2 peptide ligand in TR-FRET assay buffer along with anti-His Tb donor and dye-labeled acceptor. Varying concentrations of ABT 199 were added and the reaction was incubated at room temperature for 2 hours followed by fluorescent intensity measurements.

**Application:** Useful for the study of apoptosis, screening inhibitors, and selectivity profiling.

## Quality Assurance

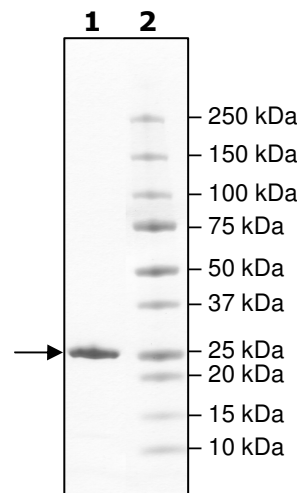


**4-20% SDS-PAGE**  
**Coomassie staining**

**Lane 1:**  
2.2 µg BCL-2

**Lane 2:**  
Protein Marker

**MW:** 24.6 kDa  
**Purity:** ≥90%



OUR PRODUCTS ARE FOR RESEARCH USE ONLY. NOT FOR DIAGNOSTIC OR THERAPEUTIC USE.

To place your order, please contact us by Phone **1.858.829.3082** Fax **1.858.481.8694**  
 Or you can Email us at: [info@bpsbioscience.com](mailto:info@bpsbioscience.com)  
 Please visit our website at: [www.bpsbioscience.com](http://www.bpsbioscience.com)