

Data Sheet

CBL-B, GST-Tag

Human, Recombinant, N-terminal GST-Tag

Catalog #: 80415

Lot #: 160308-1 **Conc:** 0.73 mg/ml

Formulated in: 40 mM Tris-HCl, pH 8.0, 110 mM NaCl, 2.2 mM KCl, 0.04% Tween20, 0.2mM TECP, 20% glycerol, 8.8mM glutathione

Stability: At least 6 months at -80°C . *Avoid freeze/thaw cycles. Storing diluted enzyme is not recommended, if necessary, use carrier protein (BSA 0.1 – 0.5%).*

References:

1. Jeon, M.S., *et al.*, *Immunity*. 2004; **21(2)**: 167-177.
2. Chiang, Y.J. *et al.*, *Nature*. 2000; **403**: 216-220.

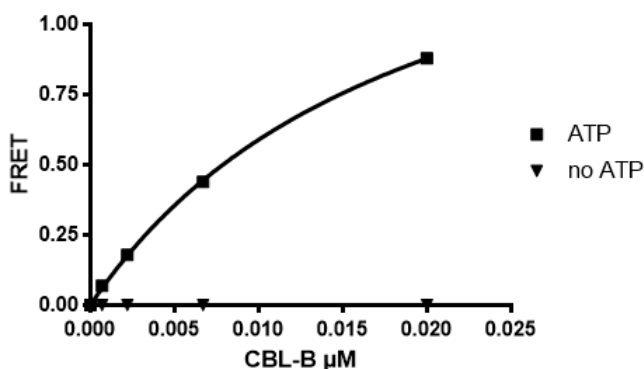
Description: Human Casitas B-lineage lymphoma proto-oncogene b (CBL-B), also known as E3 ubiquitin-protein ligase CBL-B, and RING finger protein 56, GenBank Accession No. NM_170662, a.a. 39 – 426 with N-terminal GST-Tag expressed in an *E. coli* expression system. MW=72 kDa.

Assay Description: 10 μL of reaction mixture contains 50 mM Tris, pH 7.4, 5 mM MgCl_2 , 0.01% Tween, 1 mM DTT, 0.3 μM Ub[Biotin], 100 nM Ube1, 1 mM ATP, 2 μM of UBC5h5, and various amount of CBL-B. The reaction was initiated with the addition of ATP, and incubated at 30°C for 3 hours. Tb labeled anti-GST antibody donor and XL665 labeled acceptor was added and incubated at room temperature for an hour.

Application: Useful for the study of enzyme kinetics and regulation, to dephosphorylate target substrates and for screening inhibitors.

Quality Assurance

Specific Activity



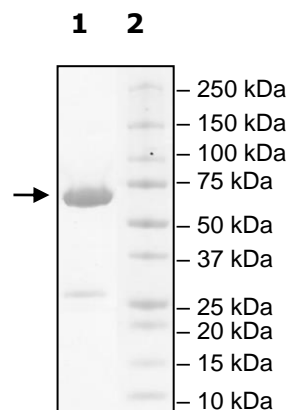
4-20% SDS-PAGE Coomassie staining

Lane 1:
CBLB(39-426)
 (3.7 μg protein loaded)

Lane 2:
 Protein Marker

Purity: $\geq 95\%$

MW:
 72 kDa



OUR PRODUCTS ARE FOR RESEARCH USE ONLY. NOT FOR DIAGNOSTIC OR THERAPEUTIC USE.

To place your order, please contact us by Phone **1.858.829.3082** Fax **1.858.481.8694**

Or you can Email us at: info@bpsbioscience.com

Please visit our website at: www.bpsbioscience.com