

Data Sheet

CUL3/Rbx1, GST-tag

Human, recombinant, N-terminal GST-tag (CUL3)

Catalog #: 80409

Lot #: 150107-3 **Conc.:** 0.13 mg/ml

Formulated in: 40 mM Tris-HCl, pH 8.0, 110 mM NaCl, 2.2 mM KCl, 0.04% Tween-20, 20% glycerol, and 1.6 mM glutathione

Stability: At least 6 months at -80°C . Avoid freeze/thaw cycles. Storing diluted enzyme is not recommended, if necessary, use carrier protein (BSA 0.1 – 0.5%).

References:

1. Kaspar, J. *et al.*, *J. Biol. Chem.* 2010; **285**: 21349-21358
2. Kaspar, J. *et al.*, *J. Cell. Sci.* 2012; **125**: 1027-1038.

Description:

Complex of human cullin-3 (CUL3) with human RING box protein 1 (Rbx1), also known as E3 ubiquitin-protein ligase RBX1. CUL3 (a.a. 2-768(end) with N-terminal GST-tag, 117 kDa) is co-expressed with Rbx1 (a.a. 1-108(end), 12 kDa) in a baculovirus-infected Sf9 cell expression system. GenBank Accession Nos. are NM_003590 (CUL3) and NM_014248 (Rbx1).

Application:

Useful for the study of enzyme kinetics, screening inhibitors, and selectivity profiling.

Quality Assurance

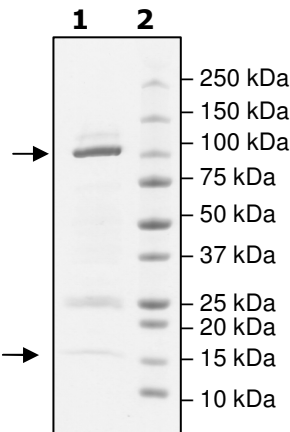
4-20% SDS-PAGE Coomassie staining

Lane 1:
3.1 μg CUL3/Rbx1

Lane 2:
Protein Marker

Purity: $\geq 72\%$
(CUL3: 66%
RBX1: 6%)

MW:
CUL3: 117 kDa
RBX1: 12 kDa



OUR PRODUCTS ARE FOR RESEARCH USE ONLY. NOT FOR DIAGNOSTIC OR THERAPEUTIC USE.

To place your order, please contact us by Phone **1.858.829.3082** Fax **1.858.481.8694**

Or you can Email us at: info@bpsbioscience.com

Please visit our website at: www.bpsbioscience.com