

## Data Sheet

### POP/PREP, His-tag

Human, Recombinant, N-terminal His-tag

**Catalog #:** 80105

**Lot #:** 160513-A                      **Conc.:** 0.75 mg/ml

**Formulated in:** 45 mM Tris-HCL, pH 8.0, 124 mM NaCL, 2.4 mM KCL, 3 mM DTT, 10% Glycerol and variable amounts of Imidazole.

**Stability:** At least 6 months at  $-80^{\circ}\text{C}$ . Avoid freeze/thaw cycles. Storing diluted enzyme is not recommended, if necessary, use carrier protein (BSA 0.1 – 0.5%).

**References:**

1. Myohanen T.T. et al., Neurochem. Res. 32 (8), 1365-1374 (2007).
2. Garcia-Horsman J.A. et al., Scand. J. Gastroenterol. 42 (5), 562-571 (2007).

**Description:**

Human Prolyl oligopeptidase (POP)/Prolyl endopeptidase (PREP) (GenBank Accession No. NM\_002726.) full length with N-terminal His tag, MW = 82 kDa, expressed in an E.Coli expression system.

**Specific Activity:**  $\geq 30$  pmol/min/ $\mu\text{g}$ .

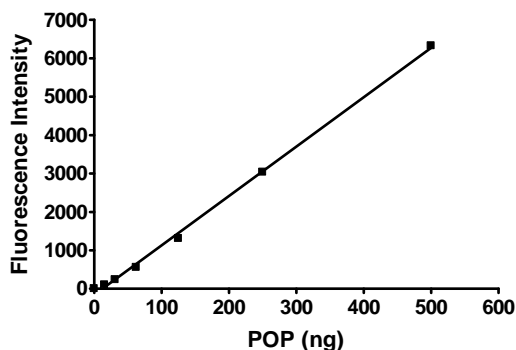
Assay condition: 10 mM Tris-HCl, pH 7.4, 10 mM MgCl<sub>2</sub>, 0.05% Tween 20, 20  $\mu\text{M}$  DPP substrate 1 (A-P-AMC), 30 min at room temperature.

**Application:**

Useful for the study of enzyme kinetics, screening inhibitors, and selectivity profiling.

### Quality Assurance

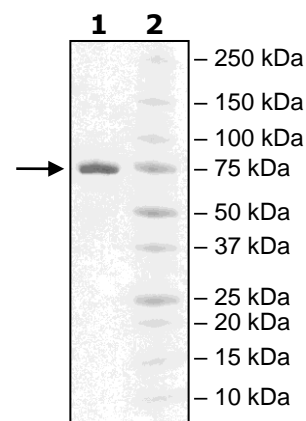
**Specific Activity**



**4-20% SDS-PAGE  
Coomassie staining**

**Lane 1:**  
2  $\mu\text{g}$  POP  
**Lane 2:**  
Protein Marker

**MW:** 82 kDa  
**Purity:**  $\geq 90\%$



OUR PRODUCTS ARE FOR RESEARCH USE ONLY. NOT FOR DIAGNOSTIC OR THERAPEUTIC USE.

To place your order, please contact us by Phone **1.858.829.3082** Fax **1.858.481.8694**

Or you can Email us at: [info@bpsbioscience.com](mailto:info@bpsbioscience.com)

Please visit our website at: [www.bpsbioscience.com](http://www.bpsbioscience.com)