

Data Sheet

Cathepsin V, His-Tag

Human, Recombinant, C-terminal His-tag
Catalog #: 80009
Lot #: 160823 **Conc.:** 0.38 mg/ml

Formulated in: 40 mM MES pH 5.0, 120 mM NaCl and 20% glycerol.

Stability: At least 6 months at -80°C . Avoid freeze/thaw cycles. Storing diluted enzyme is not recommended, if necessary, use carrier protein (BSA 0.1 – 0.5%).

References:

1. Puzer L. *et al.*, *Biochem. Biol. Chem.* **389** (2), 195-200 (2008).
2. Burden R.E. *et al.*, *Biol. Chem.* **388** (5), 541-545 (2007).

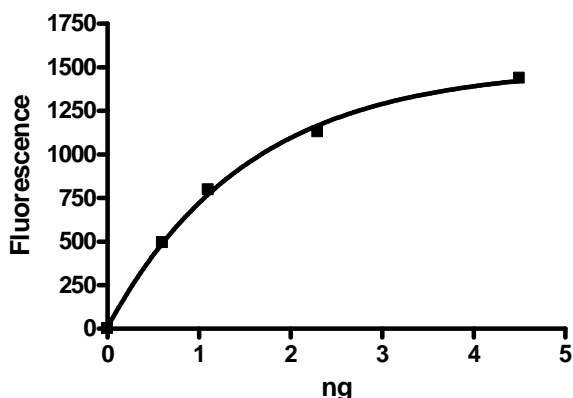
Description: Human Cathepsin V, GenBank Accession No. NM_060911, a.a. 18-334, with C-terminal His-tag, MW = 37 kDa, expressed in FreeStyle 293-F cells.

Specific Activity: >250 pmol/min/ μg
 Assay conditions: Assay is conducted in 25 mM MES buffer pH5.0, 0.1 M NaCl, 5 mM DTT and 20 μM substrate (Z-Leu-Arg-AMC) at room temperature for 30 minutes. Fluorescence intensity is measured at exc360/em460.

Application:
 Useful for the study of enzyme kinetics, screening inhibitors, and selectivity profiling.

Quality Assurance

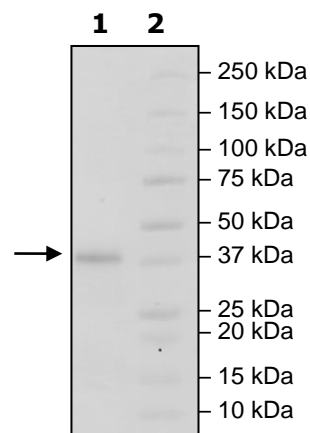
Specific Activity



4-20% SDS-PAGE Coomassie staining

Lane 1:
2 μg Cathepsin V
Lane 2:
Protein Marker

MW: 37 kDa
Purity: $\geq 79\%$



OUR PRODUCTS ARE FOR RESEARCH USE ONLY. NOT FOR DIAGNOSTIC OR THERAPEUTIC USE.

To place your order, please contact us by Phone **1.858.829.3082** Fax **1.858.481.8694**

Or you can Email us at: info@bpsbioscience.com

Please visit our website at: www.bpsbioscience.com