

## Data Sheet

### Cathepsin B

Human, recombinant, C-terminal His-tag

**Catalog #:** 80001

**Lot #:** 111128      **Conc.:** 0.66 mg/ml

**Formulated in:** 40 mM Tris-HCl, pH 8.0,  
110 mM NaCl, 2.2 mM KCl, 250 mM  
imidazole, 20% Glycerol

**Stability:** >6 months at -80°C

#### References:

1. Tu, C. *et al.*, *Cancer Res.* 2008 Nov 15;**68(22)**:9147-56.
2. Hwang, JH. *et al.*, *Cancer Lett.* 2009 Jan 18;**273(2)**:266-72.

#### Description:

Human cathepsin B (GenBank Accession No. NM\_001908), CD33 signal peptide (1-16 a.a.) + Cathepsin B (18-339 a.a.), with C-terminal His-tag, MW=43 kDa, expressed in FreeStyle 293-F cells.

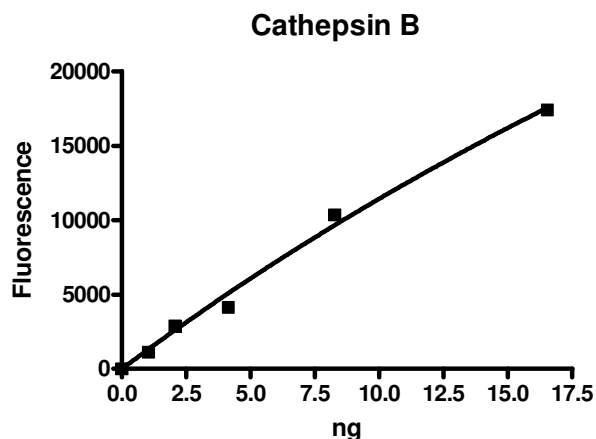
#### Specific Activity: 4048 pmol/min/μg

Assay condition: 25 mM MES, pH 5.0, 10 μM substrate (Z-Leu-Arg-AMC), 10 min, room temperature. Prior to assay enzyme was activated with preincubation at 10 μg/ml in 25 mM MES, pH 5.0, 5 mM DTT for 15 min at RT.

#### Application:

Useful for the study of enzyme kinetics, screening inhibitors, and selectivity profiling.

## Quality Assurance

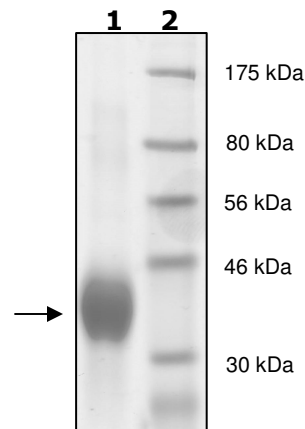


#### 10 % SDS-PAGE Coomassie staining

**Lane 1:**  
7 μg Cathepsin B

**Lane 2:**  
Protein Marker

**MW:** 43 kDa  
**Purity:** ≥95%



OUR PRODUCTS ARE FOR RESEARCH USE ONLY. NOT FOR DIAGNOSTIC OR THERAPEUTIC USE.

To place your order, please contact us by Phone **1.858.829.3082** Fax **1.858.481.8694**

Or you can Email us at: [info@bpsbioscience.com](mailto:info@bpsbioscience.com)

Please visit our website at: [www.bpsbioscience.com](http://www.bpsbioscience.com)