



6042 Cornerstone Court West, Suite B
San Diego, CA 92121
Tel: 1.858.829.3082
Fax: 1.858.481.8694
Email: info@bpsbioscience.com

Data Sheet

UBE20, GST-Tag Protein

Human, Recombinant UBE20, with N-terminal GST-tag.

Catalog #: 79374

Lot #: 171023 **Conc.:** 0.1 mg/ml

Formulated in: 50mM Tris-HCl, pH 7.5, 50mM NaCl, 10mM glutathione, 0.1mM EDTA, 0.25mM DTT, 0.1mM PMSF, 25% glycerol.

Stability: At least 6 months at -80°C.
Avoid freeze/thaw cycles.

References:

1. Rumbaugh JA. *et.al. Neurobiol Dis*, 2012 Aug 25.

Description: Recombinant full-length human UBE20, also known as E2-230K, FLJ12878, and KIAA1734. Genbank Accession BC022237 with an N-terminal GST tag, expressed in Sf9 cells via a baculovirus expression system. MW = 90kDa.

Applications: Useful for the study of enzyme kinetics, screening inhibitors, and selectivity profiling.

Quality Assurance

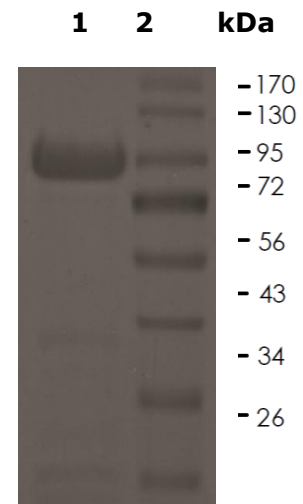
10% SDS-PAGE Coomassie staining

Lane 1:
UBE20 Protein

Lane 2:
Protein Marker

MW: ~90 kDa

Purity: ≥90%



OUR PRODUCTS ARE FOR RESEARCH USE ONLY. NOT FOR DIAGNOSTIC OR THERAPEUTIC USE.

To place your order, please contact us by Phone **1.858.829.3082** Fax **1.858.481.8694**

Or you can Email us at: info@bpsbioscience.com

Please visit our website at: www.bpsbioscience.com