

Data Sheet

Lin28B, FLAG-Avi-Tag

Human, Recombinant, N-terminal FLAG-Avi-tag

Catalog #: 79255

Lot#: 170818

Conc.: 0.48 mg/ml

Formulated in: 40 mM Tris-HCl, pH 8.0,
110 mM NaCl, 2.2 mM KCl, 100µg/ml
FLAG peptide and 20% glycerol.

Stability: At least 6 months at -80°C . Avoid
freeze/thaw cycles. Protein may be diluted to
 $\geq 100 \mu\text{g/ml}$ in PBS + glycerol and stored at
 -80°C .

References:

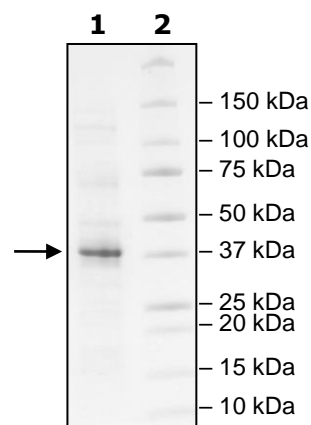
1. Piskounova, E. *et al.*, *Cell*. 2011; **5(23)**:
1066-1079.
2. Tommiska, J. *et al.*, *BMC Research
Notes*. 2011; **4(363)**.

Description: Human LIN28B, also known
as Lin-28 Homolog B, with N-terminal
FLAG-Avi-Tag, GenBank Accession No.
NM_001004317, a.a. 2-250 (end),
expressed in a HEK293 cell expression
system. MW = 30 kDa.

Quality Assurance

4-20% SDS-PAGE Coomassie staining

Lane 1:
2µg Lin28B
Lane 2:
Protein Marker
MW: 30kDa
Purity: $\geq 70\%$



OUR PRODUCTS ARE FOR RESEARCH USE ONLY. NOT FOR DIAGNOSIS

To place your order, please contact us by Phone **1.858.829.3082**
Or you can Email us at: info@bpsbioscience.com
Please visit our website at: www.bpsbioscience.com