

## Data Sheet

### **MAT2B, His-Tag**

Human, Recombinant, N-terminal His-Tag  
**Catalog #:** 79123  
**Lot #:** 170912      **Conc.:** 1.06 mg/ml

**Formulated in:** 40 mM Tris-HCl, pH 8.0,  
110 mM NaCl, 2.2 mM KCl, 20% glycerol,  
120mM imidazole

**Stability:** At least 6 months at  $-80^{\circ}\text{C}$ . Avoid  
freeze/thaw cycles. Protein may be diluted to  
 $\geq 100 \mu\text{g/ml}$  in PBS + glycerol and stored at  
 $-80^{\circ}\text{C}$ .

#### References:

1. LeGros, L., *et al.* *JBC*. 2001; **276**:  
24918-24924.
2. Peng, Q., *et al.*, *Hepatology*. 2013;  
**57(6)**:2299-2313.

**Description:** Human MAT2B, also known  
as Methionine Adenosyltransferase 2B,  
MAT2, and MAT II Beta. GenBank  
Accession No. NM\_013283, a.a. 2-334  
(end) with an N-terminal His-tag, expressed  
in an E. coli cell expression system. MW =  
39 kDa.

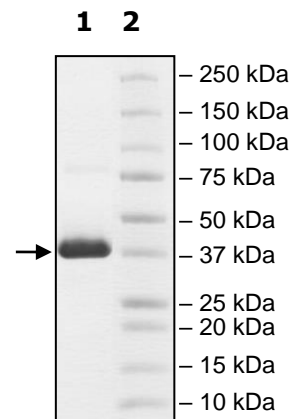
### Quality Assurance

#### 4-20% SDS-PAGE Coomassie staining

**Lane 1:**  
**MAT2B**  
**Lane 2:**  
Protein Marker

**MW:** 39 kDa

**Purity :**  $\geq 90\%$



OUR PRODUCTS ARE FOR RESEARCH USE ONLY. NOT FOR DIAGNOSTIC OR THERAPEUTIC USE.

To place your order, please contact us by Phone **1.858.829.3082** Fax **1.858.481.8694**  
Or you can Email us at: [info@bpsbioscience.com](mailto:info@bpsbioscience.com)  
Please visit our website at: [www.bpsbioscience.com](http://www.bpsbioscience.com)