

Data Sheet

KIR2DL2 Fc-fusion, Biotin-labeled

Human, recombinant, Fc fusion protein,
C-terminal Avi-tag

Catalog #: 71297

Lot #: 160630 **Conc.:** 0.79 mg/ml

Formulation: 8 mM phosphate, pH 7.4, 110 mM NaCl, 2.2 mM KCl, and 20% glycerol.

Stability: Stable for at least 6months at -80°C. *Avoid freeze/thaw cycles.* Protein may be diluted to ≥ 100 $\mu\text{g/ml}$ in PBS + glycerol and stored at -80°C.

References:

1. Miller, J., *et al.*, *Blood*. 2001 Aug; **98(3)**: 705-713.
2. Moesta AK *et al.*, *Immunology*. 2001 Mar; **180(6)**: 3969-3979.

Description: Human KIR2DL2, also known as Killer cell immunoglobulin-like receptor 2DL2, CD158K, or NKAT-4, GenBank Accession No. NM_014219, a.a. 22-245 fused at the C terminus to the Fc portion of human IgG1 followed by a C-terminal Avi-tag™ and expressed in a HEK293 cell expression system. MW=53 kDa. This protein is enzymatically biotinylated using Avi-Tag™ technology. Biotinylation is confirmed to be $\geq 90\%$. This protein runs at a higher MW due to glycosylation.

Applications: Useful as an antigen and in protein binding studies.

Quality Assurance

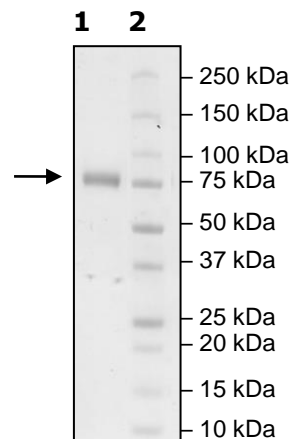
4-20% SDS-PAGE
Coomassie staining

Lane 1:
3 μg KIR2DL2

Lane 2:
Protein Marker

MW: 53 kDa+glycans

Purity: $\geq 90\%$



OUR PRODUCTS ARE FOR RESEARCH USE ONLY. NOT FOR DIAGNOSTIC OR THERAPEUTIC USE.

To place your order, please contact us by Phone **1.858.829.3082** Fax **1.858.481.8694**

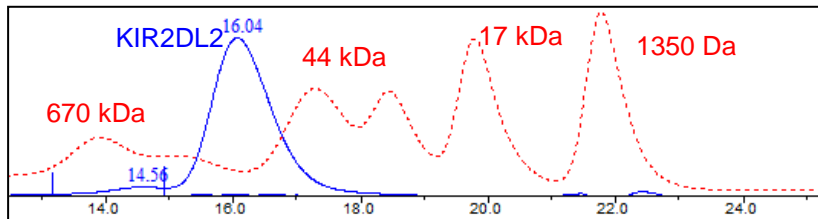
Or you can Email us at: info@bpsbioscience.com

Please visit our website at: www.bpsbioscience.com



6042 Cornerstone Court W, Ste B
San Diego, CA 92121
Tel: 1.858.829.3082
Fax: 1.858.481.8694
Email: info@bpsbioscience.com

Gel Filtration Curve



< 10% Aggregation

OUR PRODUCTS ARE FOR RESEARCH USE ONLY. NOT FOR DIAGNOSTIC OR THERAPEUTIC USE.

To place your order, please contact us by Phone **1.858.829.3082** Fax **1.858.481.8694**
Or you can Email us at: info@bpsbioscience.com
Please visit our website at: www.bpsbioscience.com