

Data Sheet

Monkey GPC3 (M. fascicularis), His-tag

Monkey, Recombinant, C-terminal His-tag

Catalog #: 71260

Lot #: 160418 **Conc.:** 1.36 mg/ml

Formulated in: 8 mM phosphate, pH 7.4, 110 mM NaCl, 2.2 mM KCl, and 20% glycerol.

Stability: At least 6 months at -80°C. *Avoid freeze/thaw cycles. Storing diluted enzyme is not recommended, if necessary, use carrier protein (BSA 0.1 – 0.5%).*

References:

1. Ishiguro, T., *et al.*, *Cancer Research*. 2008 Dec;**68(23)**:9832-8.
2. Pilia, G., *et al.*, *Nature Genetics*. 1996 Mar;**12(3)**: 241-47.

Description:

Monkey, GPC3, also known as glypican 3, DGSX, glypican proteoglycan 3, OCI-5, SGB, SGBS, and SGBS1, GenBank Accession No. XM_005594608, a.a. 22-599 (end), with C-terminal His-tag, MW=62 kDa, expressed in HEK293 cell expression system.

Application:

Useful for the study of enzyme kinetics, screening inhibitors, and selectivity profiling.

Quality Assurance

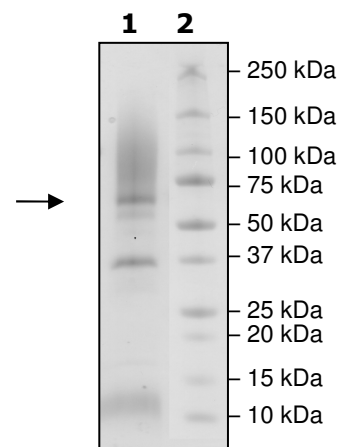
**4-20% SDS-PAGE
Coomassie staining**

Lane 1:
4 µg GPC3

Lane 2:
Protein Marker

MW: 62 kDa + glycans

Purity: ≥80%



OUR PRODUCTS ARE FOR RESEARCH USE ONLY. NOT FOR DIAGNOSTIC OR THERAPEUTIC USE.

To place your order, please contact us by Phone **1.858.829.3082** Fax **1.858.481.8694**

Or you can Email us at: info@bpsbioscience.com

Please visit our website at: www.bpsbioscience.com