

## Data Sheet

### Mouse IDO2, His-tag

Mouse, recombinant, N-terminal His-tag

**Catalog #:** 71240

**Lot #:** 150608

**Conc.:** 1.00 mg/ml

**Formulated in:** 40 mM Tris-HCl, pH 8.0, 110 mM NaCl, 2.2 mM KCl, and 20% glycerol

**Stability:** At least 6 months at  $-80^{\circ}\text{C}$ . Avoid freeze/thaw cycles. Storing diluted protein is not recommended, if necessary, use carrier protein (BSA 0.1 – 0.5%).

**References:**

1. Metz, R., *et al.*, *Canc. Res.* 2007; **67(15)**: 7082-7087.
2. Witkiewicz, A.K., *et al.*, *J. Am. Coll. Surgeons.* 2009; **208(5)**: 781-787.
3. Flick, H.E., *et al.*, *Int. Nat. J. Tryptophan Res.* 2013; **6**: 35-45.

**Description:**

Mouse IDO2, also known as Indoleamine 2,3-dioxygenase 2, GenBank Accession No. NM\_145949, a.a. 2-407(end) with an N-terminal His-tag, expressed in the presence of hemin in an *E. coli* cell expression system. MW = 46 kDa.

**Activity:**

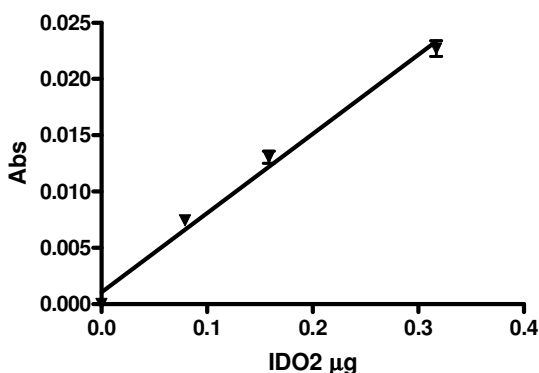
Assay Conditions: Assay was performed following the protocol in BPS Cat. #72022 using varying concentrations of IDO2.

**Application:**

Useful for studying enzyme kinetics, substrate specificity, and screening inhibitors.

## Quality Assurance

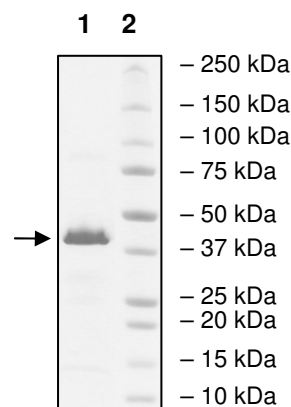
**Mouse IDO2 Activity**



**4-20% SDS-PAGE  
Coomassie staining**

**Lane 1:**  
4  $\mu\text{g}$  Mouse IDO2  
**Lane 2:**  
Protein Marker

**Purity:**  $\geq 95\%$   
**MW:** 46 kDa



OUR PRODUCTS ARE FOR RESEARCH USE ONLY. NOT FOR DIAGNOSTIC OR THERAPEUTIC USE.

To place your order, please contact us by Phone **1.858.829.3082** Fax **1.858.481.8694**

Or you can Email us at: [info@bpsbioscience.com](mailto:info@bpsbioscience.com)

Please visit our website at: [www.bpsbioscience.com](http://www.bpsbioscience.com)