

## Data Sheet

### LAG3, His-Tag

Human, Recombinant, C-terminal His-Tag  
**Catalog #:** 71229  
**Lot #:** 160229      **Conc.:** 2.03 mg/ml

**Formulated in:** 20 mM NaOAC, pH 5.5, 500 mM NaCl, 0.02% Tween 20 and 10% glycerol.

**Stability:** At least 6 months at  $-80^{\circ}\text{C}$ . *Avoid freeze/thaw cycles. Protein may be diluted to  $\geq 100 \mu\text{g/ml}$  in PBS + glycerol and stored at  $-80^{\circ}\text{C}$ .*

**Endotoxin Level:**  $<0.1 \text{ EU}/\mu\text{g}$

#### References:

1. Byrnes, *et al.*. *Cytometry A*. 2012 Sep; **81(2)**:165-8.
2. Di, Carlo., *et al.*, *J. Pathol.* 2005 Jan; **205(1)**:82-91.

#### Description:

Human secreted LAG3, also known as Lymphocyte-Activation Gene 3 and CD223. GenBank Accession No. NM 002286, a.a. 23-450, with C-terminal His-Tag, expressed in a HEK293 cell expression system. MW = 48 kDa (monomer). This protein runs at a higher MW by SDS-PAGE due to glycosylation.

#### Application:

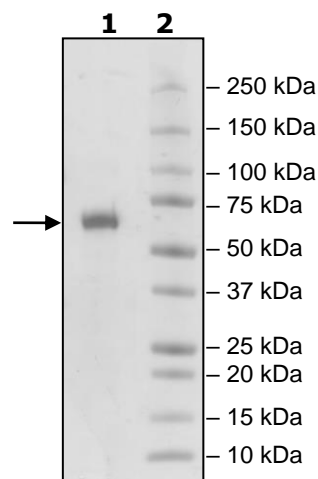
Useful for studying protein binding and screening small molecules.

### Quality Assurance

#### 4-20% SDS-PAGE Coomassie staining

**Lane 1:**  
3 $\mu\text{g}$ LAG3  
**Lane 2:**  
Protein Marker

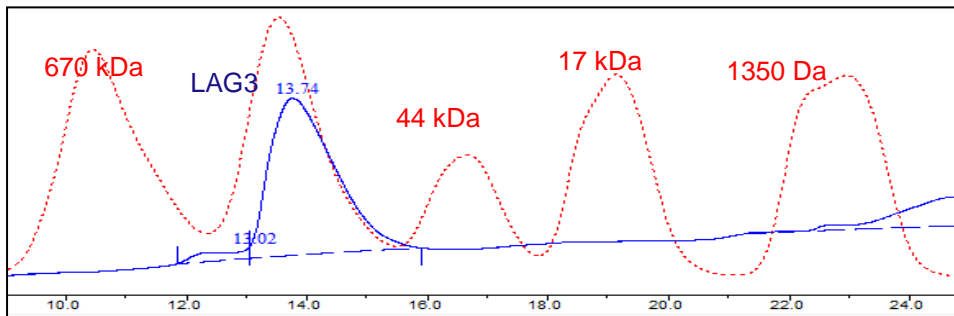
**MW:** 48 kDa  
**Purity:**  $\geq 90\%$



OUR PRODUCTS ARE FOR RESEARCH USE ONLY. NOT FOR DIAGNOSTIC OR THERAPEUTIC USE.

To place your order, please contact us by Phone **1.858.829.3082** Fax **1.858.481.8694**  
Or you can Email us at: [info@bpsbioscience.com](mailto:info@bpsbioscience.com)  
Please visit our website at: [www.bpsbioscience.com](http://www.bpsbioscience.com)

**Gel Filtration Curve**



<10% Aggregation

OUR PRODUCTS ARE FOR RESEARCH USE ONLY. NOT FOR DIAGNOSTIC OR THERAPEUTIC USE.

To place your order, please contact us by Phone **1.858.829.3082** Fax **1.858.481.8694**  
Or you can Email us at: [info@bpsbioscience.com](mailto:info@bpsbioscience.com)  
Please visit our website at: [www.bpsbioscience.com](http://www.bpsbioscience.com)