

Data Sheet

HVEM, Fc Fusion

Human, recombinant, Fc fusion protein

Catalog #: 71142

Lot#: 140422 **Conc.:** 0.94 mg/ml

Formulated in: 40 mM Tris-HCl, pH 8.0,
 110 mM NaCl, 2.2 mM KCl, and 20%
 glycerol

Stability: At least 6 months at -70°C . Avoid
 freeze/thaw cycles. Protein may be diluted to
 $\geq 100 \mu\text{g/ml}$ in PBS + glycerol and stored at
 -80°C .

Endotoxin Level: $<0.1 \text{ EU}/\mu\text{g}$

References:

1. Derre, L., et al. *J. Clin. Invest.* 2010,
120(1): 157-167.
2. Steinberg, M.W., et al. *J. Exp.Med.*
 2008, **205(6):** 1463-1476.

Description:

Human herpesvirus entry mediator A, also known as HVEM, TNFRSF14, CD270, and HVEA, GenBank Accession No. NM_003820, a.a. 37-202 fused to human IgG1 Fc, expressed in a HEK293 cell expression system. MW = 44.2 kDa. This protein runs at a higher M.W. by SDS-PAGE due to glycosylation.

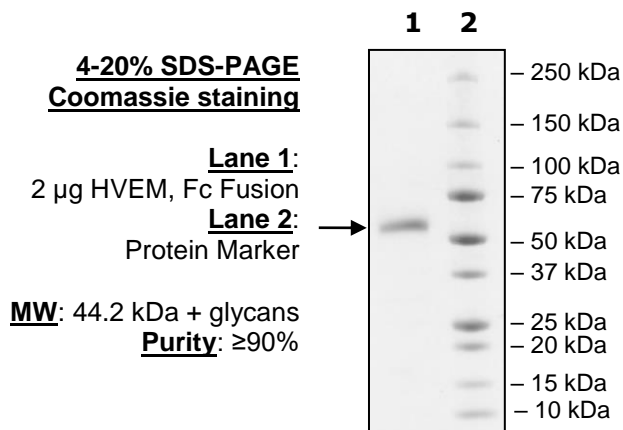
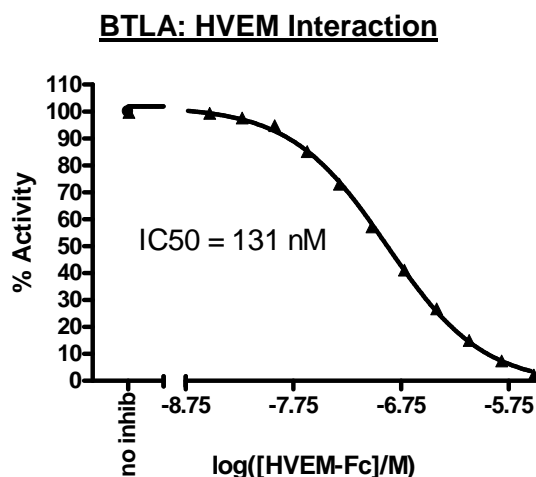
Assay Conditions:

BTLA:HVEM binding activity was measured using the using the *BTLA:HVEM [Biotinylated] Inhibitor Screening Assay Kit*, BPS Bioscience, Catalog #72008.

Application:

Useful for the study of protein-protein interaction and in vitro and in vivo protein function studies.

Quality Assurance



OUR PRODUCTS ARE FOR RESEARCH USE ONLY. NOT FOR DIAGNOSTIC OR THERAPEUTIC USE.

To place your order, please contact us by Phone **1.858.829.3082** Fax **1.858.481.8694**
 Or you can Email us at: info@bpsbioscience.com
 Please visit our website at: www.bpsbioscience.com



6044 Cornerstone Court W, Ste E
San Diego, CA 92121
Tel: 1.858.829.3082
Fax: 1.858.481.8694
Email: info@bpsbioscience.com

Sequence:

PALPSCKEDEYPVGSECCPKCSPGYRVKEACGELTGTVCEPCPPGT^{IAHLNGLSKC}
LQCQMCDPAMGLRASRNC^{SRTENAVCGCSPGHFCIVQDGDHCAACRAYATSSPGQ}
RVQKGGTESQDTLCQNCPPGT^{FSPNGTLEECQHQTKCSWLVTKAGAGTSSSHWVIE}
^{GRMD}PKSCDKTHTCPPCPAPELLGGPSVFLFPPKPKDTLMISRTPEVTCV^{VVDVSHED}
PEVKFNWYVDGVEVHNAKTKPREEQYNSTYRVVSVLTVLHQDWLNGKEYKCKVSNKA
LPAPIEKTISKAKGQPREPQVYTLPPSRDELTKNQVSLTCLVKGFYPSDIAVEWESNGQ
PENNYKTTTPVLDSDGSFFLYSKLTVDKSRWQQGNV^{FSCSVMHEALHNHYTQKSLSL}
SPGK

Black: HVEM (a.a. 37-202)

Green: linker

Red: Fc of human IgG1 (a.a. 100-330)

OUR PRODUCTS ARE FOR RESEARCH USE ONLY. NOT FOR DIAGNOSTIC OR THERAPEUTIC USE.

To place your order, please contact us by Phone **1.858.829.3082** Fax **1.858.481.8694**
Or you can Email us at: info@bpsbioscience.com
Please visit our website at: www.bpsbioscience.com