



6042 Cornerstone Court W, Ste B
San Diego, CA 92121
Tel: 1.858.829.3082
Fax: 1.858.481.8694
Email: info@bpsbioscience.com

Data Sheet

CTLA4 - HEK293 Recombinant Cell Line

Cat #: 60681

Product Description

Recombinant HEK293 stably expressing human CTLA4 (Cytotoxic T-Lymphocyte Associated Protein; CD152), GenBank Accession #NM_005214.

Background

CTLA4 is a member of the immunoglobulin superfamily. It is expressed by activated T cells and transmits an inhibitory signal to T cells. CTLA4 is homologous to the T-cell co-stimulatory protein, CD28, and both molecules bind to CD80 (B7-1) and CD86 (B7-2) on antigen-presenting cells. CTLA-4 binds CD80 and CD86 with greater affinity and avidity than CD28 thus enabling it to outcompete CD28 for its ligands and act as an "off" switch when bound to CD80 or CD86. Not surprisingly, CTLA-4 is an important drug target for the regulation of the host's response to cancer.

Application

- Screening for CTLA4 binding molecules (such as anti-CTLA4 antibody) in a cellular context

Format

Each vial contains ~3 X 10⁶ cells in 1 ml of 10% DMSO

Storage

Immediately upon receipt, store in liquid nitrogen.

Mycoplasma Testing

The cell line has been screened using the metabolite-based Mycoplasma Detection Kit (Biotool, #B3903) to confirm the absence of *Mycoplasma* species.

General Culture Conditions

Thaw Medium 1 (BPS Bioscience, #60187): MEM medium (Hyclone, #SH30024.01) + 10% FBS (Life Technologies, #26140-079) + 1% non-essential amino acids (Hyclone, #SH30238.01) + 1 mM Na pyruvate (Hyclone, #SH30239.01) + 1% Penicillin/Streptomycin (Hyclone, SV30010.01)

Growth Medium 1F (BPS Bioscience #79540): Thaw Medium 1 plus 100 µg/ml of Hygromycin B (Life Technologies, #10687-010)

OUR PRODUCTS ARE FOR RESEARCH USE ONLY. NOT FOR DIAGNOSTIC OR THERAPEUTIC USE.

To place your order, please contact us by Phone **1.858.829.3082** Fax **1.858.481.8694**

Or you can Email us at: info@bpsbioscience.com

Please visit our website at: www.bpsbioscience.com



6042 Cornerstone Court W, Ste B
San Diego, CA 92121
Tel: 1.858.829.3082
Fax: 1.858.481.8694
Email: info@bpsbioscience.com

Cells should be grown at 37°C with 5% CO₂ using Growth Medium 1F to ensure recombinant expression. CTLA4-HEK293 cells should display a typical cell division time of about 24 hours.

To thaw the cells, it is recommended to quickly thaw the frozen cells from liquid nitrogen in a 37°C water-bath, transfer to a tube containing 10 ml of Thaw Medium 1 (**no Hygromycin B**), spin down cells at 1000 rpm and resuspend cells in 5 ml of pre-warmed Thaw Medium 1 (**no Hygromycin**). Transfer resuspended cells to T25 flask and culture at 37°C in a 5% CO₂ incubator overnight. The next day, replace the medium with fresh warm Thaw Medium 1 (**no Hygromycin B**), and continue growing culture in a CO₂ incubator at 37°C until the cells are ready to be split. Cells should be split before they reach complete confluence. At first passage switch to Growth Medium 1F (**contains Hygromycin B**).

To passage the cells, rinse cells with phosphate buffered saline (PBS) and detach cells from culture vessel with 0.05% Trypsin/EDTA. After detachment, add Growth Medium 1F (**contains Hygromycin B**) and transfer to a tube, spin down cells, resuspend cells in Growth Medium 1F (**contains Hygromycin B**) and seed appropriate aliquots of cell suspension into new culture vessels. Subcultivation ratio: 1:5 to 1:10 weekly or twice a week.

Note: Just after thawing and at low density, the cells may grow at a slower rate. It is recommended to split the cells with ~ 1:4 ratio at the beginning of culturing. After several passages, the cell growth rate increases and the cells can be split with a higher ratio.

To freeze down the cells, rinse cells with phosphate buffered saline (PBS), and detach cells from culture vessel with 0.05% Trypsin/EDTA. After detachment, add Thaw Medium 1 (**no Hygromycin B**) and count the cells, then transfer to a tube, spin down cells, and resuspend in 4°C Freezing Medium (10% DMSO + 90% FBS) at ~2x10⁶ cells/ml. Dispense 1 ml of cell aliquots into cryogenic vials. Place vials in an insulated container for slow cooling and store at -80°C overnight. Transfer to liquid nitrogen the next day for storage.

It is recommended to expand the cells and freeze down more than 10 vials of cells for future use at early passage.

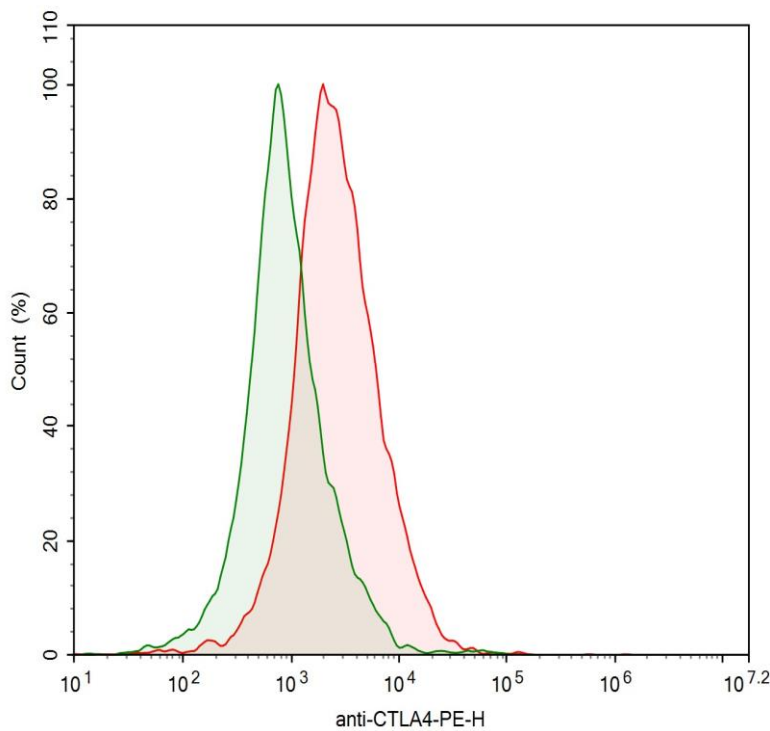
OUR PRODUCTS ARE FOR RESEARCH USE ONLY. NOT FOR DIAGNOSTIC OR THERAPEUTIC USE.
To place your order, please contact us by Phone **1.858.829.3082** Fax **1.858.481.8694**
Or you can Email us at: info@bpsbioscience.com
Please visit our website at: www.bpsbioscience.com



Validation

Cell surface expression of human CTLA4 in CTLA4-HEK293 cells was confirmed by flow cytometry.

Figure 1. Flow cytometry analysis of cell surface expression of CTLA4 in CTLA4-HEK293 cells.

CTLA4-HEK293 cells (red) or control HEK293 cells (green) were stained with PE-labeled Anti-CTLA Antibody (Biolegend, #349906) and analyzed by FACS. Y-axis is the % cell number. X-axis is the intensity of PE.



	Samples	Subset	Cell Count
	Control HEK293 Cell	Live Singlet	3,297
	CTLA4-HEK293 Cell	Live Singlet	8,190

Sequence

CTLA4 sequence (accession number NM_005214)

MACLGFQRHKAQLNLATRTWPCTLLFFLLFIPVFCKAMHVAQPAVVLASSRGIASFVCE
 YASPGKATEVRVTVLRQADSQVTEVCAATYMMGNELTFLDDSICTGTSSGNQVNLTIQ
 GLRAMDTGLYICKVELMYPPYYLIGINGTQIYVIDPEPCPDSDFLLWILAAVSSGLFFY
 SFLTAVSLSKMLKKRSPLETTGVVYKMPPTPEPECEKQFQPY

OUR PRODUCTS ARE FOR RESEARCH USE ONLY. NOT FOR DIAGNOSTIC OR THERAPEUTIC USE.

To place your order, please contact us by Phone **1.858.829.3082** Fax **1.858.481.8694**

Or you can Email us at: info@bpsbioscience.com

Please visit our website at: www.bpsbioscience.com



6042 Cornerstone Court W, Ste B
San Diego, CA 92121
Tel: 1.858.829.3082
Fax: 1.858.481.8694
Email: info@bpsbioscience.com

Related Products

<u>Product</u>	<u>Cat. #</u>	<u>Size</u>
Anti-CTLA Neutralizing Antibody	71212	100 µg
NF-κB reporter (Luc) - Jurkat Cell line	60651	2 vials
Thaw Medium 1	60187	100 ml
CTLA4:B7-1 TR-FRET Assay Kit	72120	384 reactions
CTLA4 (CD152), Fc fusion, Biotin-labeled (Human)	71152	50 µg
CTLA4 (Mouse), Fc-Fusion (Human), Avi-Tag	79062	100 µg
CTLA4 (Mouse), Fc-Fusion (Human), Avi-Tag, Biotin	79001	50 µg
B7-1 (CD80), FLAG-Avi-His-Tag	71261	100 µg
B7-1 (CD80), Fc fusion (Human) HiP™	71125	100 µg
B7-1 (CD80), Fc fusion, Biotin-labeled (Human) HiP™	71114	50 µg
B7-2 (CD86), Fc fusion (Human)	71150	100 µg
B7-2 (CD86), Fc fusion, Biotin labeled (Human) HiP™	71159	50 µg
CTLA4:B7-1[Biotinylated] Inhibitor Screening Assay Kit	72009	96 reactions
CTLA4[Biotinylated]:B7-2 Inhibitor Screening Assay Kit	72024	96 reactions
PD-L1:B7-1[Biotinylated] Inhibitor Screening Assay Kit	72026	96 reactions

Notes

License Disclosure: Purchase of this cell line grants you with a 10-year license to use this cell line in your immediate laboratory, for research use only. This license does not permit you to share, distribute, sell, sublicense, or otherwise make the cell line available for use to other laboratories, departments, research institutions, hospitals, universities, or biotech companies. The license does not permit the use of this cell line in humans or for therapeutic or drug use. The license does not permit modification of the cell line in any way. Inappropriate use or distribution of this cell line will result in revocation of the license and result in an immediate cease of sales and distribution of BPS products to your laboratory. BPS does not warrant the suitability of the cell line for any particular use, and does not accept any liability in connection with the handling or use of the cell line. Modifications of this cell line, transfer to another facility, or commercial use of the cells may require a separate license and additional fees; contact sales@bpsbioscience.com for details. Publications using this cell line should reference BPS Bioscience, Inc., San Diego.

OUR PRODUCTS ARE FOR RESEARCH USE ONLY. NOT FOR DIAGNOSTIC OR THERAPEUTIC USE.

To place your order, please contact us by Phone **1.858.829.3082** Fax **1.858.481.8694**

Or you can Email us at: info@bpsbioscience.com

Please visit our website at: www.bpsbioscience.com