



6042 Cornerstone Court W, Ste B
San Diego, CA 92121
Tel: 1.858.829.3082
Fax: 1.858.481.8694
Email: info@bpsbioscience.com

Data Sheet

NET – CHOK1 Recombinant Cell Line

Cat #: 60557

Description

Recombinant CHOK1 cell line expressing human norepinephrine transporter (NET), Genbank accession number NM_001043.

Background

NET is a monoamine transporter responsible for the sodium-chloride (Na^+/Cl^-)-dependent reuptake of extracellular norepinephrine (NE), also known as noradrenaline. NET can also reuptake extracellular dopamine (DA). The reuptake of these two neurotransmitters is essential in regulating concentrations in the synaptic cleft. NETs, along with the other monoamine transporters, play a key role in depression and neurodegenerative diseases (NDD) such as Alzheimer's and Parkinson's disease. NET is the target of many antidepressants and recreational drugs. In addition, an overabundance of NET is associated with ADHD.

Application

- Monitor norepinephrine uptake activity
- Screen for activators or inhibitors of NET activities in a cellular context

Host cell

CHO-K1 cells

Format

Each vial contains $\sim 2 \times 10^6$ cells in 1 ml of 10% DMSO

Storage

Immediately upon receipt, store in liquid nitrogen.

Mycoplasma testing

The cell line has been screened using the PCR-based Venor[®]GeM Mycoplasma Detection kit (Sigma-Aldrich, #MP0025) to confirm the absence of Mycoplasma species.

Culture conditions

Thaw Medium 3 (BPS Cat. #60186): Ham's F-12 medium (Hyclone # SH30526.01) supplemented with 10% FBS (Life technologies #26140-079), 1% Penicillin/Streptomycin (Hyclone SV30010.01).

OUR PRODUCTS ARE FOR RESEARCH USE ONLY. NOT FOR DIAGNOSTIC OR THERAPEUTIC USE.

To place your order, please contact us by Phone **1.858.829.3082** Fax **1.858.481.8694**

Or you can Email us at: info@bpsbioscience.com

Please visit our website at: www.bpsbioscience.com



6042 Cornerstone Court W, Ste B
San Diego, CA 92121
Tel: 1.858.829.3082
Fax: 1.858.481.8694
Email: info@bpsbioscience.com

Growth Medium 3B (BPS Cat. #79529): Thaw Medium 3 (BPS Cat. #60186), plus 500 µg/ml of Hygromycin B (Life Technologies # 10687-010) to ensure the recombinant expression is maintained.

Cells should be grown at 37°C with 5% CO₂ using Growth Medium 3B (Thaw Medium 3 and Hygromycin B).

It is recommended to quickly thaw the frozen cells from liquid nitrogen in a 37°C water-bath, transfer to a tube containing 10 ml of Thaw Medium 3 (**no Hygromycin B**). Spin down cells, resuspend cells in pre-warmed Thaw Medium 3 (**no Hygromycin B**) and transfer the resuspended cells to a T25 flask and culture in 37°C in a CO₂ incubator overnight. The next day, replace the medium with fresh Thaw Medium 3 (**no Hygromycin B**), and continue growing culture in a CO₂ incubator at 37°C until the cells are ready to be split. Cells should reach ~80% confluence two days after being thawed. Cells should be split before they reach complete confluence. At first passage, switch to Growth Medium 3B (**Thaw Medium 3 plus Hygromycin B**).

To passage the cells, rinse cells with phosphate buffered saline (PBS), detach cells from culture vessel with 0.25% Trypsin/EDTA, add Growth Medium 3B and transfer to a tube. Spin down cells, resuspend cells and seed appropriate aliquots of cell suspension into new culture vessels. Subcultivation ratio: 1:10 twice a week .

Functional validation

Human NET has been stably integrated into CHO-K1 cells and its constitutive expression was confirmed by Western blotting.

hNET activity was confirmed by a fluorescence-based assay kit using a fluorescent substrate that mimics the biogenic amine neurotransmitters and is taken into the cell through hNET transporter. This results in increased intracellular fluorescence intensity that can be monitored in real time using a bottom-reading microplate reader. The hNET enzymatic activity in hNET-CHO-K1 cells can be blocked efficiently by a known hNET specific inhibitor, Duloxetine, as shown by the drop in the fluorescence increase rate.

Sample protocol to determine the effect of inhibitors on exogenously expressed hNET in NET-CHO-K1 cells:

Materials Required but Not Supplied

- Neurotransmitter Transporter Uptake Assay Kit (Molecular Devices #R6138)
- HBSS buffer (1×) (Hyclone #SH30588.01).
- Thaw Medium 3 (BPS Cat. #60186)
- Growth Medium 3B (BPS Cat. #79529)

Note: We recommend each treatment be set up in at least triplicate.

OUR PRODUCTS ARE FOR RESEARCH USE ONLY. NOT FOR DIAGNOSTIC OR THERAPEUTIC USE.

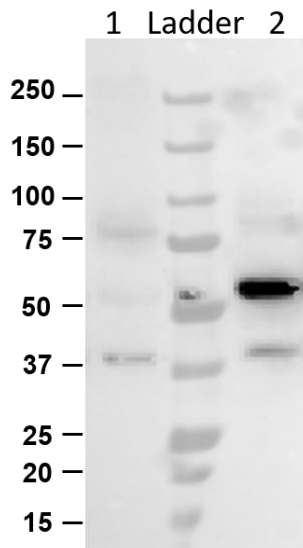
To place your order, please contact us by Phone **1.858.829.3082** Fax **1.858.481.8694**

Or you can Email us at: info@bpsbioscience.com

Please visit our website at: www.bpsbioscience.com

1. On day 1, seed NET-CHO-K1 cells at a density of 30,000-40,000 cells in 100 μ l of Thaw Medium 3 into each well of a tissue culture-treated 96-well black with clear bottom plate. Incubate cells at 37°C in a CO₂ incubator overnight. We recommend seeding a couple wells with CHO-K1 cells at the same density for use as a background control.
2. On day 2, removed plates from the incubator, aspirate the medium from the wells, and pipette 100 μ L/well of testing compound diluted in 1 x HBSS Buffer to all wells. Incubated the plates at 37°C for 30 minutes to allow binding of the compound to the transporter.
3. Add 100 μ L of Dye Solution per test well and transfer the assay plate directly to a bottom-read fluorescence microplate reader for 30 minutes on kinetic read-mode using excitation wavelength at 440 nm and emission wavelength at 520 nm.

Figure 1. Western Blot of hNET expression in NET-CHO-K1 cells. Western Blot of CHO-K1 (lane 1) and hNET-CHO-K1 cells (lane 2) stained with rabbit anti-Noradrenaline transporter antibody (Abcam, #AB84057). The full length recombinant human NET comprises 617 amino acids and has a calculated molecular mass of 65 kDa. It migrates as an approximately 60 kDa band in SDS-PAGE under reducing conditions.



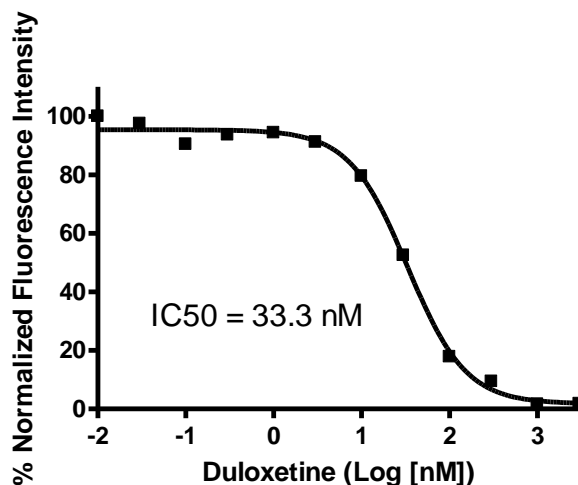
OUR PRODUCTS ARE FOR RESEARCH USE ONLY. NOT FOR DIAGNOSTIC OR THERAPEUTIC USE.

To place your order, please contact us by Phone **1.858.829.3082** Fax **1.858.481.8694**

Or you can Email us at: info@bpsbioscience.com

Please visit our website at: www.bpsbioscience.com

Figure 2. Dose response of hNET activity in NET-CHO-K1 cells to reference inhibitor Duloxetine HCl. The IC₅₀ of Duloxetine is ~ 33.3 nM.



Vector and sequence

Full length human NET cDNA was cloned into a pIRESHyg3 expression vector.

Polylinker: P_{CMV} IE-NheI-NET-EcoRV-IVS-IRES-Hygromycin^R

hNET sequence (accession number NM_001043)

```

MLLARMNPQVQPENNGADTGPEQPLRARKTAELLVVKERNGVQCLLAPRDGDAQPRE
TWGKKIDFLLSVVGFAVDLANVWRFPYLCYKNGGGAFLIPYTLFLIAGMPLFYMELALG
QYNREGAATVWKICPFFKGVGYAVILIALYVGFYYNVIAWSLYYLFSSFTLNLPWTDCG
HTWNSPNCTDPKLLNGSVLGNHTKYSKYKFTPAAEFYERGVLHLHESSGIHDIGLPQW
QLLLCLMVVIVLYFSLWKGVKTSKGVVWITATLPYFVLFVLLVHGVTLPGASNGINAYL
HIDFYRLKEATVWIDAATQIFFSLGAGFGVLIAFASYNKFDNNCYRDALLTSSINCITSFV
SGFAIFSILGYMAHEHKVNIEDVATEGAGLVFILYPEAISTLSGSTFWAVVFFVMALLALGL
DSSMGGMEAVITGLADDFQVLKRHRKLFTFGVTFSTFLLALFCITKGGIYVLTLLDTFAA
GTSILFAVLMEAGVSWFYGVDRFSNDIQQMMGFRPGLYWRLCWKFVSPAFLLFVVVV
SIINFKPLTYDDYIFPPWANWVGWGIALSSMLVPIYVIYKFLSTQGSLWERLAYGITPEN
EHLVAQRDIRQFQLQHWLAI
  
```

References

1. Zhou, J., *Drugs Future*. 2004; **29(12)**: 1235–1244.
2. Jorgensen, S., *et al.*, *Journal of Neuroscience methods*. 2008; **169**: 168-176.

OUR PRODUCTS ARE FOR RESEARCH USE ONLY. NOT FOR DIAGNOSTIC OR THERAPEUTIC USE.

To place your order, please contact us by Phone **1.858.829.3082** Fax **1.858.481.8694**

Or you can Email us at: info@bpsbioscience.com

Please visit our website at: www.bpsbioscience.com



6042 Cornerstone Court W, Ste B
San Diego, CA 92121
Tel: 1.858.829.3082
Fax: 1.858.481.8694
Email: info@bpsbioscience.com

License Disclosure:

Purchase of this cell line grants you with a 10-year license to use this cell line in your immediate laboratory, for research use only. This license does not permit you to share, distribute, sell, sublicense, or otherwise make the cell line available for use to other laboratories, departments, research institutions, hospitals, universities, or biotech companies. The license does not permit the use of this cell line in humans or for therapeutic or drug use. The license does not permit modification of the cell line in any way. Inappropriate use or distribution of this cell line will result in revocation of the license and result in an immediate cease of sales and distribution of BPS products to your laboratory. BPS Bioscience does not warrant the suitability of the cell line for any particular use, and does not accept any liability in connection with the handling or use of the cell line. Modifications of this cell line, transfer to another facility, or commercial use of the cells may require a separate license and additional fees; contact sales@bpsbioscience.com for details. Publications using this cell line should reference BPS Bioscience, Inc., San Diego.

OUR PRODUCTS ARE FOR RESEARCH USE ONLY. NOT FOR DIAGNOSTIC OR THERAPEUTIC USE.

To place your order, please contact us by Phone **1.858.829.3082** Fax **1.858.481.8694**

Or you can Email us at: [**info@bpsbioscience.com**](mailto:info@bpsbioscience.com)

Please visit our website at: [**www.bpsbioscience.com**](http://www.bpsbioscience.com)